



**Canterbury Eagles Golfing Society  
of New Zealand**

**The First 50 Years**



**GOLDEN JUBILEE**

**1969-2019**

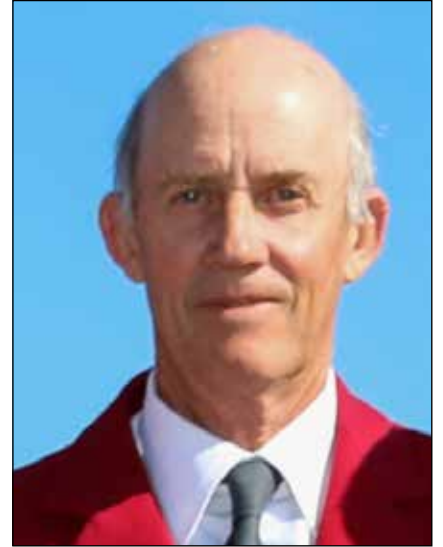
## From the President

A warm welcome to the Canterbury Eagles Golden Jubilee. It gives us the opportunity to acknowledge the men who established the Eagles Golfing Society of Canterbury fifty years ago. Their work has been built on by Eagles who have continued to carry out the aims of the Society particularly those that have accepted administrative positions as officers and on the committee.

The monthly visits to clubs have contributed to the fellowship between Eagles and Eaglasses. We are grateful to the clubs for their support through the use of their courses and the hospitality they have provided.

The Halberg Tournament has become the major event of the year and the amount raised nationally has now past five million dollars. Junior golf has always been a focus of the Eagles and this continues. It is pleasing that two Canterbury juniors, Hayato Miya and Amy Weng, won the national Eagles titles this year.

We look forward to continuing fellowship while supporting Canterbury juniors and the Halberg Trust.



*Neil Robertson*

President - Eagles Golfing Society of Canterbury

## Acknowledgements

This book has built on the booklet produced for the 40 years anniversary of the Canterbury Eagles. The records of the early years are sparse and even in more recent years documentation is missing. This has made it difficult to provide a complete record of the First Fifty Years.

However using the Red Books and electoral rolls we have identified and gained in formation on most past Eagles and have produced short profiles on all Eagles.

Thanks must go to the many Eagles, Golf Clubs and other golfers who have supplied photographs and information for inclusion in this book. Brian Osmond, Patron of New Zealand Eagles, has supplied information on John Bull and Bill Revell who were Eagles at North Shore before coming to Canterbury and leading the formation of the Eagles Golfing Society of Canterbury.

Max Milesi has had an important part in producing the book with photographs and cover design.

Our thanks to Papanui Press for printing the fifty year publication. They have been easy to work with and their suggestions on lay out have been invaluable.

*David Doak and Roger Gilbert*





# Canterbury Eagles Golfing Society of New Zealand

## The First 50 Years

The Eagles Golfing Society began in Auckland in 1956 with the original aim of supporting junior golfers. It was thought at the time that with the introduction of golf trundlers the existing nine to fifteen year old caddies would no longer be required. Golf professionals showed little interest in coaching boys therefore something should be done to keep this emerging young talent playing golf as well as assuring future membership of clubs.

The objects of the Society evolved "To promote golf and good fellowship, assist in encouraging and instructing junior golfers, and promote sportsmanship, skill and etiquette." Membership of the Eagles Society was by invitation. The original criteria for membership was to have played the game to a high standard and to be a good bloke; this was later enlarged to include administrators and others who had contributed much to their clubs.

The Auckland Eagles visited other regions to encourage the establishment of Eagle Societies and in the mid-sixties a concerted effort was made. John Bull and Bill Revell had been foundation members of the Auckland Eagles when members of the North Shore Golf Club. John was manager and Bill chairman of Directors of Associated British Cables and when they transferred to Christchurch they arranged an inaugural meeting to form a Canterbury Eagles Golfing Society. Others present at the 1969 meeting were Frank Roberts, Ray Townshend and Murray Stanley. In 1970 the first Annual General Meeting of the Canterbury Society was held. The early constitution had a limit of sixty active Eagles, but this became outdated and was removed from the constitution in 2008.



**John Bull**  
*Foundation Member  
& First President*



**Ray Townshend**  
*Foundation Member  
& Club Captain*



**Frank Roberts**  
*Foundation Member*

Three main aims of the Society remain constant:

- Fellowship of golfers with regular monthly visits to clubs.
- The encouragement and development of junior golf.
- The support of the Halberg Disability Sport Foundation's Activity Fund with running annual multi-sponsored tournaments.

There is undoubted fellowship at mid and end of year socials and annual golf fixtures, well supported by members and partners. Monthly visits to Canterbury clubs began in 1970. Progress was slow in the first few years but slowly grew until by 1984 a full programme of twelve matches was established. The golf courses visited include most of the Canterbury ones, including Lake Coleridge. In the early years Eagles members sometimes gave lessons or tips to the local members as part of the visit. In 1970 the practice of presenting a tree to courses being visited was begun but appears to have stopped by 1987.



**Eagles Visit to Hawarden 2011**

## The Beginnings in Canterbury

Members of the Christchurch Golf Club were prominent in the formation of the Canterbury Eagles. John Bull was the inaugural president and John Cuddon, an accountant, was the secretary-treasurer. Bull, a prominent businessman, continued to play an influential role in the 1970s and 1980s. He was manager of Associated British Cables and Bill Reville, also a foundation Eagle, was chairman of the Board. Richard Hamilton, Russley, the third president, was also company director. Ray Townshend, the second president, farmed at Racecourse Hill and was a member of the Waimakariri Gorge Club. He is believed to be the first club captain of the Eagles and his work was recognised when with John Bull and Murray Stanley in 1991, they became the first elected life members.

Murray Stanley was a greenkeeper who helped with the design of a number of Canterbury courses. He won nine club championships at Avondale, Kaiapoi and Russley and held course records at Kaiapoi, Ashburton and Hanmer Springs. He was a reserve for New Zealand and the South Island Champion in 1957. He played eight Freyberg Rosebowls and was a member of the first Canterbury team to win the provincial title in 1957 together with fellow Eagles Bob Charles and Ron Clements. He was a regular attendee at monthly visits even after he stopped playing.

Stuart Hunt from Hororata was president in 1979/80. His regular attendance and support was recognised when he was elected a life member in 2000.

Alan Brown (Windsor) was elected an Eagle in 1975 and became the secretary-treasurer in 1977. He served two year terms as club captain and president and in 1995 became the first apparel officer. He was elected a life member in 2003 and has the longest record of membership of present Eagles.



**Alan H Brown**



**Colin Walker**



**Murray Stanley**  
Foundation Member 1969

Colin Walker was an early Eagle and like Alan Brown held the positions of president, club captain and secretary and treasurer. He was a Kaiapoi member and later was secretary-manager at Waitikiri. Waitikiri member John O'Gorman, a well remembered character, was secretary-treasurer for ten years.

In the early years a number of leading Canterbury golfers accepted invitations to join. Murray Stanley golfing feats are recorded above. Ron Clements played in many Canterbury teams with Murray and was a member of three winning Freyberg Rosebowl teams. He won four Canterbury stroke play titles and eight club championships at Waitikiri and Templeton. Frank Roberts won the South Island title and played more than 200 Woodward Cup matches for Avondale where he was the senior champion 13 times. Toby Richards was runner up in the New Zealand match play and represented Canterbury for 13 years in the Freyberg Rosebowl. He won 18 championships at Hororata and five at Russley.



**Toby Richards**

*Leading Canterbury Golfer*



**Ray Atkinson**

*Leading Canterbury Golfer*

Tom Stout (Russley) won Canterbury stroke play and match play titles and represented the province. Bob Bradley played Freyberg Rosebowl for Canterbury in the 1970s and won senior championships at seven or eight different clubs. He became an Eagle when playing for Miramar. Ray Atkinson was New Zealand foursomes champion in 1967 with John Durry having been runner up in the national match play in 1965. He was a leading golfer in Canterbury in the 1960s including four years in the Freyberg Rosebowl team, before moving to Dunedin where he was elected an Eagle.

Over the years members from country clubs included a number who won multiple club championships. Foundation members Ross Gardner, a regular attendee at Eagles events, won six Amuri titles and Richard Hamilton was Richmond Hill champion five times before joining Russley. Other members who joined before 1975 included Jack Rich who was

champion at Greendale 20 times, Robin Lambie who won 13 Ellesmere Club championships and five Ellesmere Open titles and Maurie Childs who was successful ten times at Cheviot. Stuart Murray was Scargill champion ten times between 1965 and 1985. Errol Tweedy won eight Lincoln championships in the 1970s. Ged Earl was Hawarden champion eleven times. Jim Monk won the Kaiapoi title nine times and was successful five times at Amberley in the 1980s. Tom Morgan won 20 Amuri titles and also three at Culverden and Paul Burnett was successful in ten years at Cheviot. Steve Hill was Cheviot champion 17 times between 1975 and 1996 and also won the Hanmer Springs title twice. More recently John Prebble won ten times at Templeton and after moving to Cheviot was senior champion there in 2013. The most successful of the Eagles has been Moana Pollock. As well as representing Canterbury Mo was Amberley champion 33 times.

Richard Davison who stands on the wrong side of the ball, has twice won the New Zealand Lefthanders Championship and is World chairman of the lefthanders body. He joined the Rangiora Club after moving from Otago in 2012.

A number of top greenkeepers followed Murray Stanley as elected Eagles. In the 1980s Bob Bradley, Noel Bain and Fin Hobbs became members. They were also leading Canterbury golfers and later became Canterbury selectors. Many of the country Eagles were involved as greenkeepers or spent many hours working as volunteers for their clubs.

Bill Green was elected secretary of the Canterbury Provincial Golf Association after it was formed in 1947 and became the first auditor for the Eagles. After his death in 1973 David Lawrence (Harewood) took over for ten years, Eric Hunter (Russley) was the auditor for the next eleven years and then David Lawrence acted for another seven years. Both were elected honorary members. Fred Shaw (Harewood) served as auditor from 2000 until 2011 followed by George Walker, also a Harewood member. Kel Doolan (Templeton) has held the position since 2014.

Alan H. Brown was the first apparel officer in 1995. He was followed by Jim Preston (Bottle Lake), Derek McGregor (Weedons) and Gavin Paterson (Coringa) who is the present officer.



**Ian Eyles**  
1st Patron

Ian Eyles became the first patron of the Canterbury Eagles in 1999, a position he retained until his death in 2001. He was club captain and president of the Ashburton Golf Club and after moving to Christchurch he joined the Russley Club in 1978. He was elected an Eagle in 1982. After serving as club captain and president he was elected patron. He had been South Island vice-president of New Zealand Golf Association. Since then Murray Stanley and Alan Barley, both life members, Ken Gatehouse (Scargill) and Roger Gilbert (Ellesmere) have been patron.

After becoming an Eagle in 1977 Alan Barley (Russley) moved through the roles of captain and president and was elected patron in 2002 and a life member in 2005. He was the driving force behind the formation of the Canterbury Golf Referees Association and became their first president and a life member.



**Alan Barley with CCS member Hannah Bennett  
at the 1988 Halberg Tournament**

He played an active role on the Halberg Trust after replacing Richard Hadlee on the Trust Panel in Christchurch. He was particularly pleased that at a Halberg Trust Annual meeting in Auckland his motion "that the Eagles jacket be approved as official dress at the Awards dinner" was carried by the meeting.

Hagley member Rex Bull was elected an Eagle in 1991 and spent 18 years on the committee, eleven of those years as treasurer, similar to the years he was involved with the finances of Canterbury Golf. He convened the Eagles assistance in running golf tournaments for

World Firefighters and Masters Games. He was awarded life membership of Canterbury Eagles in 2015.

Tom Whitaker (Kaiapoi) became the New Zealand junior vice-president in 2012 the first Canterbury Eagle to accept national office. He took over the presidency in 2016 and was joined at the national level by Ray Porter (Templeton) who became the secretary-treasurer. Ray had been the Canterbury treasurer for five years after joining Canterbury Eagles as a reciprocal member from Nelson/Marlborough. They served Eagles well during their two years in office and Tom introduced some changes that were needed by the organization.



**George Stringer, eight  
years as Secretary**

George Stringer became secretary in 2009 and attended eight AGMs and 96 committee meetings before he retired in 2017. In 2005 he was the Canterbury "Administrator of the Year". He was the Central Canterbury Golf Sub-Association secretary for twenty years and became a life member in 1999.

Sir Bob Charles became an honorary member of the Canterbury Eagles in the early 1990's. He played for Canterbury after moving to Christchurch from Masterton and was in the first Canterbury team to win the Freyberg Rosebowl. After turning professional he became New Zealand's greatest golfer. He has a farm near the Waimakariri Golf Club.



**Doug & Marie Robertson, Lake Coleridge**

The Robertson family have shown remarkable dedication to Canterbury Eagles. Doug, the only member from the Lake Coleridge Club, and his wife Marie were regular attenders at Eagles functions although they lived at Mt Oakden at the top of Lake Coleridge. Their son Neil has had a distinguished playing career with the North Canterbury and Central Canterbury Sub-Associations and more recently in Masters competitions. He joined the Eagles in 2004 when at Hororata, was elected president in 2014 and still holds that position, the longest tenure of any president. His wife Margaret (Waimakariri Gorge) is the present secretary becoming an Eagle in 2018.

Eagles wall plaques appreciative of the support given to the Canterbury Eagles have been presented to the Coringa Golf Club, Hawarden Golf Club and Waimairi Beach Golf Club.

At present, more than 230 golfers have been accepted into the Canterbury Eagles.



**Val Mardon & Moana Pollock  
- First Women Eagles 2009**

In 2009, after much debate at national level, with strong support from Canterbury, women were permitted to join the Eagles Society. The first two women to be admitted to a Society in New Zealand were Canterbury Eagles Moana Pollock and Val Mardon.

Other Societies are now following our initiative and now six women are members of Canterbury Eagles.



**Canterbury & Nelson-Marlborough Eagles at Kaikoura**

## Visits to Neighbouring Eagles

Canterbury has two annual fixtures with wives or partners included in the teams. Since 1970 Canterbury Eagles have played against Aorangi Eagles for the Piston Trophy a highly polished piece of car engine, donated by H.W. Revell. The 1970 match was played at the Hororata Club's Glentunnel course and the following year Mayfield Club was visited. In 1972 Nelson/Marlborough also played in the fixture and won the Trophy. In 1978 the match was played at the St Andrews Golf Club and included Otago Eagles. In recent years matches have been played in January with alternating host and venue. At times Buller/Westland Eagles are included in the Canterbury Aorangi fixture. Aorangi is ahead in overall wins by 24 to 18.

*The story goes that foundation members Bill Revell and John Bull were travelling in Bill's car, a Ford or a Dodge, possibly to an Eagles event, when they did the big end.*

*The piston trophy was the result.*

In 2014 Eagles Tom Whitaker and Ron Kennedy established a game for six junior Canterbury players, boys and girls, to play against a similar team from Aorangi in conjunction with our annual fixture in January. The team members chosen should be under 17 with a handicap 15 and above. The junior team is equipped with a Canterbury Eagle shirt and is rewarded with a small trophy.



**Canterbury & Aorangi junior teams**



**Tom Morgan receiving Piston Trophy from Colin Shore**

Canterbury Eagles also play Nelson/Marlborough Eagles at the Kaikoura Golf Club for the Ross Gardner Trophy. The trophy, a large wooden bowl, was turned and presented for competition by foundation member Ross Gardner. The annual fixture began in 1983 with tournament dates confirmed by consultation between parties. Golf is played with local members on Saturday and an Eagles only game on the Sunday morning. Over the last few years the fixture has been held in November with Nelson/ Marlborough ahead 18 to 15 with one match tied.



**Westport visit Queens Birthday 1979**

Back Row: (L to R) Doreen Brown; Merle Barley; Alice Gardner; Margerite Childs; Doreen Townshend; Ray Townshend; Maurie Childs; Anne Drummond; Roy Drummond  
Front Row: (L to R) Ross Gardner; Alan Brown; Alan Barley

In 1977 a visit was made to Westport and in the 1980s annual games against Buller/Westland were played at Hanmer Springs, Greymouth and Reefton Golf Clubs. For some years reciprocal matches were played but they lapsed around 1989.

## Support for Junior Golf

Over the years the Canterbury Eagles have supported junior golf by providing instruction, running an annual under age tournament, and in giving substantial financial grants to the Canterbury Golf Association.

Our support of junior golf continues financed mainly with Canterbury's share of the New Zealand Eagles national raffle. The two best boys and the best girl from our annual tournament have their travel and tournament entry paid to go to the national finals. The names of the winning juniors contain many well-known Canterbury golfers.

Further financial support of junior golf covers prizes and meal costs at qualifying tournaments. In 2008 a pledge was made to support up to \$1500 annually for professional coaching. This is presently undertaken by Jason Tilley, at no charge to junior members 17 years and under, who do not fall into a current Canterbury development programme.

Grants to the Canterbury Golf Association have included a trailer purchased for the Canterbury Golf Junior Development Officer and an Explanar golf swing apparatus. Cash donations supporting the secondary school golf championship and the Lincoln University golf and education scholarships have been made.

Arthur Chambers (Weedons) and Ron Kennedy (Charteris Bay) had very similar service records. They were both president of the Central Canterbury Sub-Association and were elected to the Canterbury Golf management committee. They were prominent in junior administration with both bodies and then played a prominent role with the juniors in the Eagles.



**Tom Whitaker  
& Amelia Garvey**  
NZ Eagles Golfer of the  
Year

## Halberg Foundation

In 1969 athletics legend Jesse Owens, guest speaker at the Halberg Awards, was invited to play in a charity golf tournament which was a huge success and spurred the start of many fund raising tournaments organized by the Eagles to benefit the Halberg Foundation. Since 1969 the New Zealand Eagles have contributed enormously through Eagles golf days. This support has helped encourage young people with a disability to participate in sport and active leisure of their choice through the Halberg Disability Sport Foundation Activity Fund which provides substantial grants towards equipment and lessons.



**Halberg Tournament at Coringa**

The initial 18 hole Canterbury Halberg tournament at Coringa, run by the Eagles, became more and more popular and overcrowded necessitating running two tournaments, morning and afternoon. This was still not enough; a second day was required for corporate teams of four. This became difficult for the Coringa Golf Club and after 23 years of free use a new venue was used in 2007. We thank and congratulate the Coringa Golf Club for their magnificent contribution and sponsorship.



**Ken Fergus  
& John Kiddey**  
starting the  
Halberg field



**Mo Pollock & Val Mardon at the Halberg prize table**

During the next four years the venue for the tournament was shared between Christchurch Golf Club and Waimairi Beach Golf Club.

The earthquakes of 4<sup>th</sup> September 2010 and again 22<sup>nd</sup> February 2011 forced further changes for the Halberg tournament in venue, sponsorship and reward. Tournaments were held at country clubs, 2011 at Hororata, at Amberley in 2012 and 2013 and returned to Waimairi in 2014.

Separate corporate days got up and running again in 2017.

A short extract follows from an article by Shelley McMeeken, Chief Executive of the Halberg Disability Sport Foundation, on the occasion of 50 years relationship with the Eagles Golfing Society. "The Eagles generously contribute to the Halberg Activity Fund; a programme that provides physically disabled young people with sport and recreation lessons, camps and equipment. In the last year, the Eagles have helped the Foundation to distribute 217 Activity Fund grants nationally – including 25 bikes and trikes, 95 swimming lessons, plus martial arts, basketball and snow sport lessons. The enormous contribution that we have received from the Eagles over the past 50 years through numerous fund raising tournaments has made a remarkable difference to the lives of thousands of young New Zealanders. Thanks to this incredible generosity, we will reach a milestone of five million dollars of funding from the Eagles this year."

Since 1974 Canterbury Eagles have raised over \$324,000 by running annual Halberg tournaments. It is gratifying to know that monies raised, from the local Halberg tournaments, go back to this area for funding or material support for disabled persons within this area.



**Ray Porter & Tom Whitaker presenting Eagles cheque at the Halberg Awards dinner**

## Special Olympic Golfers

In 2008 the Canterbury Eagles Golfing Society was approached seeking support for a group of young Special Olympic golfers. Originally five young lads were being coached with the help of Lynne Marie Shaskey at Rawhiti golf club. A proposal was put to the Canterbury Eagles for sponsorship of a professionally designed yearly golf coaching programme to meet the needs of this group starting in 2010. Canterbury Eagles took up the sponsorship so that the individual Special Olympic golfers would derive direct benefit from a professional coach and programme which continues to-day under the tutorship of Jason Tilley. Tom Whitaker played a leading role in co-ordinating the Special Olympics.



**Eagles & Competitors at the Special Olympics Ribbon Day**

Eagles: Mike Hurley (L), Rex Bull, Terry Downey;  
Jim Townshend; John Kiddey, David Doak;  
Trevor McCaughan

## National Convention

Every third year a South Island Eagles Society hosts the Annual National Convention, with over three hundred participating playing golf and attending social events. Canterbury has hosted conventions in 1979, 1990 and 2005 and will do so again in 2020.

Individual and team golf events are held at the convention with some success coming our way. We tend to be heavily outnumbered when the events are in the North Island. However, Canterbury won the men's and women's team championships at the Aorangi convention in Ashburton in 1999.

Salver winners: Ray Atkinson, Colin Cooke, Don Harvey, Roger Gilbert.

Waikato Shield winners: Lou Buchanan, Norma Gatehouse, Heather Harvey and Judy Leith.

Neil Robertson won the individual best gross at the Aorangi convention in Timaru in 2014. Our ladies have done better: Sue Doak at Napier, 2010, and Carole Steele at Blenheim, 2017, winners of "The Cut Magazine" prize for the best stableford score in a round. Women's teams of four have won combined stableford prizes at Timaru, 2014, at New Plymouth, 2016, and at Blenheim 2017 conventions.

Canterbury Eagles held a fundraising Earthquake Relief Tournament and Auction at Waimairi on the 19th November 2010 with proceeds amounting to \$5100.00 presented to the Red Cross.

Our contacts for this tournament together with a donation of \$250.00 were passed on to Reagan McKenzie, a 16 year old golfer from Reefton, who was running a golf tournament to raise funds for those affected by the Pike River Mine disaster. Her tournament raised \$8000.00.



**Winning Canterbury team  
at the NZ Convention, Aorangi 1999**  
Don Harvey (L); Colin Cooke; Roger Gilbert; Ray Atkinson



**Winning Canterbury team  
at the NZ Convention, Timaru 2014**  
Sue Doak (L); Margaret Robertson; Carole Steele;  
Jeanette Inkson

## Stalwart Eagles



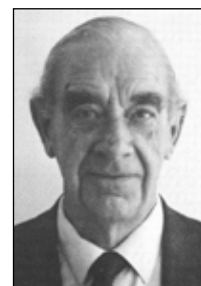
Ron Kennedy  
Juniors



Arthur Chambers  
Juniors



Rex Bull  
Treasurer & Life Member



John O'Gorman  
Secretary - Treasurer

## 1990 - A Busy Year

1990 must surely have been the busiest year in the history of the Canterbury branch.

In February Canterbury hosted the 25<sup>th</sup> National convention and was asked to make a special effort for the occasion as it was the Silver Jubilee year.

The whole Canterbury branch, Eagles and Eaglasses, got behind the event with many hours of work and planning culminating in a successful result evoking high praise from our visitors.

Canterbury kept within the budget allocated.

April that year saw the Canterbury Eagles boys and girls championships at the Avondale Golf Club.

Then for the first time ever the National Eagles boys and girls championships came to Canterbury and were played in conjunction with the AMP NZ boys and junior championships at the Coringa Club in late August. Again our members rose to the occasion helping with billeting, transport and administration.

The climax of the year was undoubtedly the staging of the World Amateur Golf Championships for the ladies' Espirito Santo Trophy at Russley and the men's Eisenhower Trophy at Shirley. Eagle Doug Cresswell was chairman of the organizing committee ably backed by a vast army of willing workers. Our members were involved in the organization of these events at all levels and again involved with individual Canterbury golf clubs hosting an international team and providing hospitality packs for the overseas visitors.

Even with all the above the 1990 programme included the mid-winter golf and dinner; the Christmas golf and dinner; assistance was given in organizing the BMW tournament, a new event; assistance in running the peewee tournament at the Ascot golf course in December; the Canterbury v. Nelson- Marlborough at Kaikoura in November and the Canterbury v. Aorangi at Ashburton, January 1991.

## After Fifty Years

The visits to Canterbury Golf Clubs continue with members playing for carved eagles trophies each month. In 2009 an eclectic stableford competition was introduced in an effort to attract more members to the monthly visits.

The JD Bull Beefeater silver tray and the Eaglass trophy are competed for on closing day.



**Eagles monthly trophies**

Major events each year are the Halberg Tournament and the Golf Warehouse stableford raffle which raises funds for junior golf, and the visits to Aorangi and Nelson/Marlborough.

The generosity of the clubs visited who make their courses available, often at reduced fees, and provide catering each time is appreciated by Eagles members.

A fifty year history would not be complete without recognizing the members who have served with distinction and guided the future role of the Canterbury Eagles Golfing Society. Our foundation members, John Bull, Ray Townshend, Murray Stanley and Ross Gardner were some who showed the commitment required to establish our Society in the Canterbury region. In only five years the Society had forty five members and was visiting clubs in the area.

Now we can look back over fifty years of fellowship and service.



**The Eagles Visit Cheviot**

# Eagles 1969 - 2019

## 1969 - 1974



Christchurch

### John (JD) Bull

John Bull became one of the first Eagles when a member of the North Shore Golf Club in Auckland in the 1950s and became a foundation member of the Canterbury Eagles when he transferred to Christchurch. He was the first president from 1969 to 1971 and was elected a life member in 1991. He joined the Christchurch Golf Club in 1954 and was club captain 1982/84, president 1985/86, and elected a life member in 1989.

He was on the Canterbury Golf management committee in 1983/84.

John was the manager of Associated British Cables and president and a life member of the Canterbury Manufacturers Association. He died in 2002.

### Bill (HW) Revell

Bill Revell, like John Bull, became one of the first Eagles when a member of the North Shore Golf Club in Auckland in the 1950s and became a foundation member of the Canterbury Eagles when he transferred to Christchurch.

He joined the Christchurch Golf Club in 1960 and served on the committee, 1965/68, and as vice-president in 1970/71.

Bill was Managing Director of TJ Edmonds & Co. and was involved in the early deer culling industry with Tim Wallis and others. A company director he was chairman of Smiths City Market, Associated British Cables and other companies. He died in 2001.



Waimakariri Gorge

### Ray (RC) Townshend

Ray Townshend was a foundation member of the Canterbury Eagles in 1969 and is thought to be the first club captain. He was president in 1972/74 and elected a life member in 1991.

He was the first president of the Waimakariri Gorge Golf Club in 1961 and held the position until 1971, having been made a life member in 1970. He was on the Canterbury Provincial Golf Association management committee from 1961 until 1976 and was president in 1969. In 1979 he was the New Zealand Golf Association president.

Ray farmed near Racecourse hill and joined the Russley Golf Club when he retired to Christchurch in 1972. He died in 2005 aged 92 years.

### Murray (MW) Stanley



Kaiapoi

Murray Stanley was one of Canterbury's leading golfers and after serving in the Army in World War Two he became a greenkeeper at Kaiapoi in 1949. He was a foundation member of the Eagles, was one of the first life members in 1991 and was elected Patron in 2011 a position he held until 2015.

He first played Woodward Cup as the No 1 for Avondale in 1948 and played 104 matches for Avondale, Kaiapoi and Russley. He won nine club championships at Avondale, Kaiapoi and Russley and broke the course records at Kaiapoi, Ashburton and Hanmer Springs. He was a reserve for the New Zealand team in 1953 and won the South Island title in 1957. He played Freyberg Rosebowl tournaments for Canterbury between 1952 and 1959 and was in the first Canterbury team to win the Trophy at Gisborne in 1957. Two other Eagles, Bob Charles and Ron Clements were also in the team.

He was the greenkeeper at Kaiapoi, Russley and St Andrews (Hamilton) and then returned to the Christchurch Golf Club at Shirley where he remained until he retired in 1986.

Murray became involved with course design. Weedons, Cheviot and Karamea were designed by him and he helped at Akaroa, Winton and Alexandra at different times. He was a life member of the Weedons and Cheviot Golf Clubs and the Canterbury Greenkeepers Association.

He died in 2017.

## John (JJ) Cuddon

John Cuddon was a foundation member of the Canterbury Eagles and its first secretary-treasurer, a position he held until 1976. He became a member of the Christchurch Golf Club in 1954 and was on the committee from 1961 to 1965. He was a chartered accountant with Jamieson & Cuddon.



Amuri

## Ross (RR) Gardner

Ross Gardner was a long-time member of the Amuri Golf Club and was a foundation member of the Canterbury Eagles. When he resigned from the Eagles in 1993 he was made an honorary member. He presented the Ross Gardner Trophy for competition between Canterbury and Nelson-Marlborough Eagles. His son Paul is an Aorangi Eagle. He was senior champion at Amuri six times between 1959 and 1972 and was a selector for North Canterbury. He was still beating his age in 1995 when aged 85. Ross farmed at Waiau and died in 2001.



Christchurch

## Bill (GWA) Green

Bill Green was a foundation member of the Canterbury Eagles and its first auditor, a position he held until his death in 1973. He was an accountant and sharebroker. He became a member of the Christchurch Golf Club in 1949, was secretary in 1950/51, on the committee 1953/56, vice-president 1970/71 and club captain in 1972/73. After the Canterbury Provincial Golf Association was formed in 1947 he became the first permanent secretary in April 1948.



Avondale

## Frank (FW) Roberts

Frank Roberts was a foundation member of the Eagles in 1969. He was Avondale club captain in 1976 and became a life member of the Club. He was a member of the club for 54 years and was senior champion 13 times. He played 218 Woodward Cup games between 1947 and 1985, winning 92 and halving 35. He was 68 when he played his last Woodward Cup game. In 1968 he won the South Island Championship. In 1960 he attended the first New Zealand RSA tournament at Greymouth and won the tournament on several occasions. He was on the Canterbury Provincial Golf Association management committee from 1976 to 1980. Frank joined the Army during the Second World War and was a Prisoner of War for four and a half years. After returning he spent time at his bach at Taylors Mistake recuperating before joining the NZ Railways and he worked there until retirement. He died in 2000.



Waimairi Beach

## John (JW) Dawson

John Dawson was probably a foundation member of the Canterbury Eagles in 1969 and on the committee from 1973 to 1976. He was club captain at the Waimairi Beach Golf Club in 1953/54, president from 1957 to 1959, made a life member in 1960 and was patron from 1960 until 1992. He was on the Canterbury Provincial Golf Association management committee for ten years from 1957 and Canterbury president in 1957. John was working for the Transport Board in 1974 and was an exporter in 1980.



Waimairi Beach

## Les Clegg

Les Clegg was probably a foundation member of the Canterbury Eagles in 1969. He was a member of the Waimairi Beach Golf Club where he served two terms as club captain, 1957/59 and 1968, and three terms as president, 1962/63, 1971/73 and 1975/76 and was made a life member in 1972. He was on the Canterbury Provincial Golf Association management committee from 1971, elected president in 1975 and was in office when he died in 1976. Les was a mattress and bedding manufacturer trading as Clegg Bros. He had retired by 1969.



Russley

## Richard (RHT) Hamilton

Richard Hamilton was probably a foundation member of the Canterbury Eagles and was the president in 1975/76. He represented Richmond Hill on the first Christchurch Metropolitan committee when it was formed in 1941, was president in 1947 and became first Canterbury president when the Canterbury Provincial Golf Association was formed in 1947. He held the positions of secretary, club captain, president and life member at the Richmond Hill Golf Club and was senior champion five times between 1937 and 1950. He joined Russley in 1946, his wife Kitty had been a member there since 1937. In 1954/55 he was the club president and was made a life member of the club in 1987. Richard was a company director and died in 1994.

## Norrie (NC) Martin

Norrie Martin was a reciprocal member from Aorangi Eagles, a foundation member of the Canterbury Eagles and was a member for almost 25 years before he resigned in 1992. He was a clerk in Timaru before becoming secretary-manager of the Russley Golf Club from 1971 until 1978.

## Geoff Johnston

Geoff Johnston was an Eagle before 1975. A member of the Waitikiri Golf Club he played Woodward Cup and lost to Jimmy Jackson in a senior club championship final.

## Cliff (CW) Dale

Cliff Dale was the Waitikiri club captain in 1972 and became an Eagle before 1975. He was a manufacturer and manager of Majestic Appliances Company and had retired by 1993.



Kaiapoi

## Jack (John C) Casserley

Jack Casserley was for many years secretary of the Kaiapoi Golf Club and joined the Eagles before 1974. He was on the Canterbury Provincial Golf Association management committee from 1958 until 1966 and president in 1964. He was secretary of the Combined Canterbury Workingmens and Cosmopolitan Clubs Recreational Association which was responsible for the formation of the McLeans Island Golf Club. Jack was a bus driver at Kaiapoi and had retired by 1972. He was also a life member of the Kaikoura Golf Club. He died in 1979.



Waimakariri Gorge

## Roy (JR) Drummond

Roy Drummond was an Eagle before 1974. He was club captain of the Waimakariri Gorge Golf Club in 1964/67, president in 1976/77 and elected a life member in 1982. Roy was the manager and head shepherd of Woodstock Station on the north side of the Waimakariri River.

## **Hugh (HR) Sim**

Hugh Sim was a motor mechanic who became an Eagle before 1974. He organised the early Halberg Tournaments and resigned from the Eagles in 1987.

He was president of the Waimairi Beach Golf Club in 1961 and again from 1967 to 1969 and was made a life member in 1972.



Templeton

## **Ron (RE) Clements**

Ron Clements was an Eagle before 1971. He was a leading Canterbury golfer in the 1950s and 1960s and was a member of three successful Canterbury Freyberg Rosebowl teams in 1957 at the Poverty Bay Golf Club, 1962 at the Otago Golf Club and 1965 at the Waitikiri Golf Club. He won four Canterbury stroke play titles.

Playing at Waitikiri he won the senior championship in 1959 and 1961 and at Templeton he was the senior champion in 1954, 1956, 1962, 1963, 1968 and 1970. He also won open titles at many clubs in Canterbury. He was a member of the Canterbury Provincial Golf Association management committee in 1968-69.

Ron was a warehouse supervisor associated with plumbing.



Russley

## **Doug (WD) Armstrong**

Doug Armstrong was an Eagle before 1973. He was a leading golfer in Canterbury in the early 1950s, on the Canterbury management committee from 1953 to 1961 and president in 1958. As a manager and selector he managed the first Canterbury team to win the Freyberg Rosebowl at Poverty Bay in 1957. He was senior champion at the Russley Golf Club in 1952, their club captain in 1952/53 and president in 1956/57.

Doug was an insurance consultant and agent who had retired by 1993.



Russley

## **Cedric (CG) Penlington**

Cedric Penlington was a solicitor who joined the Eagles before 1975 and was president in 1977/78. He was on the Christchurch Metropolitan Committee in 1944 and the president in 1946. He had joined the Russley Golf Club in 1941, was president there in 1951/53, was the Canterbury Provincial president in 1952 and New Zealand vice-president in 1953.



Russley

## **Stan (SGH) Rich**

Stan Rich was an engineer who had retired by 1978 and had become an Eagle before 1974.

He joined the Russley Golf Club in 1952 and was president in 1968/69, on the Canterbury Provincial Golf Association management committee from 1963 to 1971, the Canterbury president in 1968 and the New Zealand vice-president in 1971.



Russley

## **Tom (TM) Stout**

Tom Stout was a leading golfer who joined the Eagles before 1974. He was a member of the Russley Golf Club in 1953 and rejoined about 1969. He was club captain there in 1974/75 and had been the club champion in 1971. He was on the Canterbury Golf Association management committee in 1974/75 and won the Canterbury stroke play in 1970 and the match play title in 1971 and played for Canterbury.

Tom was a bank officer in Wellington who came to Canterbury in the late 1960s and was a bank manager when he went to Auckland later in the 1970s.



Russley

## Alf Dyhrberg

Alf Dyhrberg was the first County Engineer employed by the Paparua County Council and had retired by 1984. He had joined the Eagles before 1974 and was president in 1981/82. He played at Windsor before joining the Russley Golf Club in 1952 where he was the president in 1960/61.

## Ken (KE) Johnston

Ken Johnston became an Eagle before 1974 when he was an associate member of both Canterbury and Otago Eagles. Between 1980 and 1988 he was a Canterbury Eagle and then returned to Otago and joined the Wanaka Golf Club. Ken was a company manager who joined the Russley Golf Club in 1972.



Rangiora

## Max (CM) Turner

Max Turner was an Eagle before 1975. He was the Rangiora Golf Club president from 1957 to 1959, on the Canterbury Provincial Golf Association management committee in 1958 and the president in 1960. He was an orchardist at Loburn.



Rangiora

## Bob (RA) Milne

Bob Milne became an Eagle before 1975. He served two terms as president of the Rangiora Golf Club in 1968/69 and 1977/78 and was elected a life member of the Club in 1978. He was on the Canterbury Provincial Golf Association management committee from 1969 to 1978 and president in 1976.

Bob was a farm advisory officer with the Department of Agriculture and died in 1979.



Rangiora

## Alan (AC) Fraser

Alan Fraser who was on the Canterbury Provincial Golf Association management committee and president in 1951 became an Eagle before 1974. He was president of the Rangiora Golf Club in 1950/51 and made a life member in 1966. He died in 1990.

Alan was a lawyer and wrote the Jubilee of Rangiora RSA 1919-1969.

## Austin (GA) Smith

Austin Smith served in the Second World War and was a member of the RSA. He became a milkman and was president of the Kaikoura Golf Club in 1961/63 and a life member. He was a left hander who was an Eagle before 1974.



Kaiapoi

## Colin (CW) Walker

Colin Walker became an Eagle before 1974 and served in most administrative positions. He was club captain in 1989/90 and president in 1991/92. Then in 1994 he took on the treasurer's role and in 1995 was secretary-treasurer. He remained a member until his death in 2002.

He was a member of the Kaiapoi Golf Club and their president in 1971/72.

Colin was the financial officer with New Zealand Farmers Co-op and in 1987 became the secretary-manager of the Waitikiri Golf Club.



Hororata

### **Stuart (SJ) Hunt**

Stuart Hunt was an Eagle before 1974 and president in 1979/80. He was elected a life member in 2000.

He was president of the Hororata Golf Club for 20 years from 1955 to 1974 and was a life member of the Club.

Stuart farmed in the Hororata area and died in 2002.



Hororata

### **Toby (EHM) Richards**

Toby Richards was an outstanding sportsman who became an Eagle before 1974. He was a hard hitting batsman and played rugby for Canterbury. In 1966 he was runner up in the NZ match play and played Freyberg Rosebowl for Canterbury for 13 years between 1966 and 1979 including being in the winning team at Timaru in 1976. He won the Hororata Golf Club senior championship 18 times between 1950 and 1991 and was Russley champion for five years between 1961 and 1966.

He was the Hororata club captain in 1977 and a life member of the Club. He was on the Canterbury management committee from 1967 until 1981 and was the president in 1973.

Toby was a farmer in the Hororata-Windwhistle area and died in 2005.



Ellesmere

### **Robin (RT) Lambie (1907-1997)**

Robin Lambie was a farmer near Leeston who joined the Eagles before 1974.

He represented the Ellesmere Golf Club at the meeting when the Canterbury Provincial Golf Association was formed in 1947. He was president of the Club in 1940. Before the Second World War he spent a lot of time preparing the course for play each season. He also took an important part in reopening the course after the War.

Robin dominated Ellesmere golf for many years. He won his first senior championship in 1934 and his 13<sup>th</sup> 38 years later in 1972. He also won the Ellesmere open five times. He died in 1997.



Greendale

### **Jack (JH) Rich**

Jack Rich was an Eagle before 1974.

He was the senior champion at Greendale Golf Club for 20 years between 1950 and 1973. He helped build the extensions to the clubhouse in 1966 and was made a life member of the club in 1978.

He was also a leading member of Central Canterbury and Country teams for many years.

Jack was a painter and paperhanger who had a paint shop in Darfield. He moved to Karamea in the early 1980s where he continued with the Buller-Westland Eagles and was very involved with the Karamea Golf Club for the decade.



Greendale

### **George (GB) Shipley (1926-2004)**

George Shipley joined the Eagles before 1974 and remained a member until his death in 2004.

He was club captain of the Greendale Golf Club in 1952/53 and secretary from 1956 until 1975 when he was made a life member.

In later years he played at Tai Tapu where he was secretary from 1979 until 1985.

He farmed at Greendale.



Harewood

### **Hec (HV) Reid**

Hec Reid was a Mid-South Canterbury (Aorangi) Eagle before 1974 and remained an Eagle until he resigned in 2003.

He was the senior champion at the Methven Golf Club in 1954, secretary of the Club from 1957 until 1961 and the president in 1964/65. He was elected a life member in 1971.

Hec was a fat lamb buyer who retired to Christchurch where he joined the Harewood Golf Club and was their president in 1978/79. He died in 2006.

### **Des (DW) Warwick**

Des Warwick was an Eagle before 1974. He moved to Clyde in Otago in 1994.

He held most positions at the Hawarden Golf Club being on the grounds committee, secretary 1958/61, president 1965/66, club captain 1970/72 and was a life member.

Des had a transport business, Hawarden Transport, and a garage in Hawarden. After retiring he was caretaker at the school.



Avondale

### **Les (L.J.) Russell (1912-1999)**

Les Russell was an Eagle before 1974 and a brother of Don Russell an Amberley Eagle.

He began playing golf at the Glenmark Golf Club in 1939 when farming in Omihi and was senior champion in 1940. He carried on the farm for eight years after moving to Christchurch in 1948 and joined the Rawhiti Golf Club. He was handicapper, on their match committee and played in the Blank Cup.

His association with the Avondale Golf Club began in 1966. He was on the committee, became course supervisor and did voluntary maintenance on the course. He died in 1999 aged 86 years.



Coringa

### **Merv (MJ) McNally**

Merv McNally was an Eagle before 1974.

He played 85 Woodward Cup games for the Waitikiri Golf Club and was their club captain in 1968 and president in 1972/73. He received life membership of the club.

During the 1970s he was selector and manager of Canterbury teams, on the management committee from 1969 until 1980 and the Canterbury president in 1977. He was South Island vice-president in 1980.

When the Coringa Golf and Country Club was established he was heavily involved as a foundation committee member and was the first president in 1969/70.

He was a flourmiller at Waikuku Beach in 1946 and by 1949 had shifted to Blenheim Road where he became managing director of Worralls milling company.

### **Les (LC) Lindley**

Les Lindley was an Eagle before 1974 and was the first secretary of the Coringa Country Club.. He was an accountant and company director.



### **Maurie (MFA) Childs**

Maurie Childs was an Eagle before 1974 and continued as a member until his death in 2000. He was the club captain in 1980/81 and president in 1983/84.

He was president of the Cheviot Golf Club in 1952/53. He won his first senior championship before the war in 1939 and was the champion ten times between then and 1963. He played for a time at Kaiapoi and joined Rangiora after moving there from the farm.

Maurie had a farm between Domett and the Hurunui River mouth. He served during the Second World War.



Amberley

### **Don (AD) Russell (1908-1977)**

Don Russell became an Eagle before 1974.

He was a farmer who had the Amberley Golf Club's course on his property from 1947 until the present course was built at Amberley Beach and opened in 1955.

He was the first president of the Amberley Golf Club after it moved and was elected a life member of the Club.

He was a member of the Canterbury Provincial Golf Association management committee from 1960 until 1973 and president in 1966.



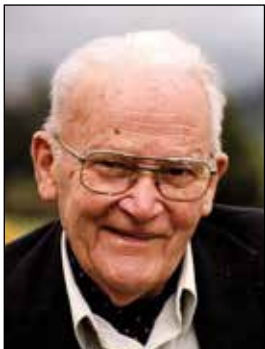
Amberley

### **Ben (IB) Stocks**

Ben Stocks joined the Eagles before 1975, served on the committee in the early 1980s and remained a member until his death in 1997.

He was a member of the Amberley Golf Club and president in 1967/68. He represented Amberley on the North Canterbury Sub-Association and was a life member.

He was a builder and built the Amberley clubhouse.



Akaroa

### **Alan (AH) Stewart, QSM (1916-1999)**

Dr Alan Stewart MB, CHB, was an Eagle before 1974.

He played golf on the steep Akaroa course above the township and then on nine holes at the top of Takamatua before the Duvauchelle first nine holes of the eighteen hole course were opened in 1967. He was very involved with the development of the new course and was the first president from 1968 until 1970 and was then elected patron.

Alan was a character who loved his golf. He served the Banks Peninsula area as the doctor, a difficult task because of the distances to travel on winding hilly roads. He received a Queens Service Medal for his work.



Akaroa

### **Tom (TB) Morten**

Tom Morten was an Eagle before 1974.

He was a member of the Little River Golf Club which had a nine hole course at "Kinloch". He won the senior championship in 1958, was president in 1968/69 and was the voluntary greenkeeper. When the Duvauchelle course was constructed he joined the Akaroa Golf Club.

Tom had a farm near the Hilltop and was a lamb buyer.

### **Thomas (TJ) Allison**

Tom Allison was an Eagle before 1974 when he was a member of Mid-South Canterbury Eagles and an associate member of both Canterbury and Otago. He was a farmer at Hawea Flat for many years. He had retired when he came to Canterbury from Oamaru and lived at the Rakaia Huts in Ellesmere. By 1978 he had moved to Alexandra and was a member of the Alexandra Golf Club.

### **Dick (RF) Mackie**

Dick Mackie was an honorary member of Canterbury Eagles from before 1974 until 1978.

He was a foundation member of the Hawkes Bay Eagles and a member of the Waipukurau Golf Club. He was also a member of the New Zealand Golf Council.

## 1974



Christchurch

### Brian (BW) Cleland

Brian Cleland was a foundation member of the Nelson Eagles in 1968. After a short period in Auckland he joined Canterbury Eagles in 1974 and was an associate member until 1984.

He joined the Christchurch Golf Club in 1951 and is still a member. He has also been a member at Hororata Golf Club, was junior coach there for many years and was recently made an honorary life member.

Brian worked in real estate.

## 1975



Bottle Lake

### Alan (AH) Brown

Alan Brown became an Eagle in 1975 and has held most positions in the Canterbury group. He was secretary-treasurer from 1977 to 1980, club captain in 1982/83, president in 1985/86 and elected a life member in 2003. He was president of the Windsor Golf Club in 1973/74, on the Canterbury Provincial Golf Association management committee from 1969 until 1977 and Canterbury president in 1974.

Alan was a warehouse manager for Bing Harris.



Avondale

### Wallace (WM) Samson

Wally Samson joined the Eagles in 1975.

He served two terms as both club captain 1962, 1971, and president 1968, 1982/83, of the Avondale Golf Club. He was also a country member of the Akaroa Golf Club.

He was on the Canterbury Golf management committee from 1969 to 1975 and managed the Canterbury junior team.

Wally served in the Air Force during World War Two. He trained in Canada and was Squadron Leader, 22 Squadron, Royal Air Force. He had a market garden near Kerrs Reach and died in 2003.



Harewood

### Victor (VA) Smith

Vic Smith was elected an Eagle in 1975. He was president of the Harewood Golf Club in 1968 and became a life member of the Club.

Vic was an electrician who had retired by 1980 and died in 1996.

## 1976

### Edward (EH) Gallagher

Hec Gallagher had played for many years as a member of the Culverden Golf Club when he joined the Eagles in 1976. He was a farmer on the Mouse Point Road in the Culverden area. He died in 1978.

### Joe (CA) McGregor

Joe McGregor was a farmer on the Inland Road who served in World War Two and was an RSA member. He was a member of the Kaikoura Golf Club who joined the Eagles in 1976. He did not hold office but served the club well both as bar convenor and on the course development and maintenance.

### Jock (J McL) Reid

Jock Reid was a long-time member of the Kaikoura Golf Club, president in 1936, a life member and patron who joined the Eagles in 1976.

He was manager of Pyne Gould Guinness Ltd. in Kaikoura and farmed at nearby Goose Bay.

## 1977



Russley

### Alan (AV) Barley

Alan Barley joined the Eagles in 1977 and held the positions of club captain 1987/88, president 1989/90, patron 2001/10, and was awarded life membership in 2005.

He joined the Russley Golf Club in 1955 and was club captain in 1964/65, president in 1970/71 and became a life member in 1990. He was a member of the Canterbury Provincial Golf Association management committee in 1972/73 and again from 1980 to 1987 and was Canterbury president in 1985/86. He was the South Island vice-president in 2000.

He was the driving force behind the formation of the Canterbury Golf Referees Association in 1988, was the first president and later elected a life member.

Alan served in the Navy during World War II and was a member of the staff of Christchurch Boys High School for many years. He wrote books on his specialist subjects, history and geography, and wrote a biography of fellow teacher and All Black, Pat Vincent. Alan died in 2017 aged 94 years.

### Ron (RT) Challis

Ron Challis became an Eagle in 1977 when a member of the Waitikiri Golf Club where he was president in 1976/77. He had been club captain at the Waimairi Beach Golf Club in 1960/61 and on the Canterbury Provincial Golf Association management committee from 1976 to 1979.

Ron was a motor engineer and managing director of Stanmore Motors Ltd.



Scargill

### Stuart Murray

Stuart Murray joined the Eagles in 1977 and was an honorary member when he died in 2001.

He was a member of the Scargill Golf Club and its president from 1973 to 1977 and won the senior championship ten times between 1965 and 1985.

He served on the Canterbury Golf management committee for ten years from 1985 and was the provincial president in 1983.

A farmer in the Blythe Valley he was an active member of other organisations in the district and was president of the Cheviot A&P Association.

## 1978



Lincoln

### **Errol (EH) Tweedy**

Errol Tweedy was an Eagle from 1978 until his death in 1998 at the age of 80 years.

He was the club captain at the Lincoln Golf Club from 1951 to 1953, again in 1971, president in 1955, 1968/69 and 1978/79 and won the senior championship eight times between 1949 and 1973.

Errol was a garage proprietor in partnership with Colin Cornish.



Kaiapoi

### **Bernie (BV) Glubb**

Bernie Glubb was a painting contractor who was an Eagle from 1978 until his death in 2005.

He was president of the Kaiapoi Golf Club in 1973/74 and again in 1979/80 and also played at the Russley Golf Club.

Bernie was on the Canterbury Provincial Golf Association management committee and was Canterbury president in 1977.

## 1979



Waimakariri Gorge

### **Bill (WF) Bignell**

Bill Bignell has been an Eagle for 50 years from 1979 to 2019. He was secretary of the Waimakariri Gorge Golf Club from 1979 until 1996 and was made a life member in 1996.

Bill was a school teacher at the View Hill School and had retired by 1984.

### **John (JR) Wilson**

John Wilson joined the Eagles in 1979 and died in 1983 aged 60 years.

He was the president of the Hanmer Springs Golf Club from 1968 until 1975 and was a very active committee member for many years.

John served in the Second World War and drew and farmed a soldier settlement block when the St Helens Station was sub-divided.



Bottle Lake

## Jack (John D) Stewart

Jack Stewart was an Eagle from 1980 until his death in 2004. He was club captain of the Windsor Golf Club in 1975/76, president from 1977 to 1979 and made a life member in 1979. Jack was a market gardener in Marshlands.



Waimairi Beach

## Jim (JT) Gregg

Jim Gregg was an Eagle from 1980 until his death in 2001. He was vice-captain in 1993/94 and president in 1995/96.

He was club captain of the Waimairi Beach Golf Club from 1970 until 1976, president in 1980/82 and again in 1989/92, made a life member in 1979 and was patron from 1996 until his death.

He was a member of the Canterbury Provincial Golf Association from 1976 to 1989, president in 1980 and honoured with life membership in 1989. He was honorary vice-president of the New Zealand Golf Association in 1987.

He was also a life member of both the Burwood Bowling Club and the Christchurch Rugby Football Club.

Jim served in the Army and Air Force during World War Two and worked for Fletcher Humpherys and then in the family business Garnett Campbell.



Templeton

## Fin (FT) Hobbs

Fin Hobbs became an Eagle in the 1970s when a member of the Westport Golf Club where he was active in junior coaching. He was not active in Eagles after moving to Canterbury in 1980.

He was a leading Tasman golfer who played Freyberg Rosebowl for six or seven years. He won the Canterbury match play title in 1977 (his son, Andrew, won it in 1997), won the Canterbury foursomes with his brother, Russell, and was a Canterbury selector in the late 1990s.

Fin was greenkeeper at Westport, Templeton and more recently at Hororata.



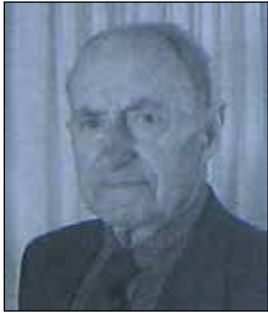
Russley

## Bob (RC) Garnett

Bob Garnett was an Eagle from 1980 until he resigned in 2010. He was club captain of the Russley Golf Club in 1969/70, the president in 1974/75 and was awarded life membership in 1990. He joined Russley in 1948.

He was on the Canterbury Golf Association management committee in 1978/79.

Bob was a clerk who worked on NZ Trotting Calendar with his brother-in-law and then for engineer George Chaney.



Russley

### **Bill (WAC) Turner**

Bill Turner was a pharmacist who became an Eagle in 1980. He was a scratch golfer who played interclub for the Russley Golf Club for 25 years. He was club captain in 1978/79, president in 1982/83 and made a life member of the Club in 1999.



Culverden

### **Harold (HG) Hartnell**

Harold Hartnell became an Eagle in 1980.

He was president of the Culverden Golf Club from 1962 to 1964 and was voluntary greenkeeper with Ian Frizzell.

He farmed "Sandford Downs" near Culverden and retired to Amberley in 1980. He died in 1990.



Coringa

### **Reg (RM) Faulls**

Reg Faulls was a clerk who joined the Eagles in 1980. He was the secretary-treasurer from 1981 to 1983, club captain 1984/86, and president 1987/88.

He played an important role in the establishment of the Coringa Country Club and was club captain from 1971 to 1976. He was president from 1978 until 1981 when he was awarded life membership. He then joined Waitikiri Golf Club.

He was a member of the Canterbury Provincial Golf Association management committee from 1983 to 1985.



Charteris Bay

### **Doug (DN) Cresswell**

Doug Cresswell was an Eagle from 1980 until his death in 2008

He was club captain of the Charteris Bay Golf Club from 1972 to 1976, president in 1984/85 and made a life member in 1986. He was active in the Central Canterbury Golf Sub-Association and represented it on the Canterbury management committee. He was Canterbury president in 1981 and was elected a life member in 1991.

He was President of New Zealand Golf in 1982/83 and a member of the council from 1985 to 1996. He was the convenor for the World men's and women's Team Championships held at Russley (Espirito Santo Trophy) for the women and at Shirley (Eisenhower Trophy) for the men in 1990. He was made a life member of New Zealand Golf and was awarded the New Zealand Commemorative Medal for Services to Sport in 1990.

Doug owned Doug Cresswell Motors which specialized in motor bikes.

## **1981**



Russley

### **Alan (AM) Tillson**

Alan Tillson joined the Eagles in 1981 and was on the committee for seven years in the 1980s before serving as club captain in 1993/94. He was president of the Hagley Golf Club in 1974/75 and in 1978 he became a member at Russley.

Alan who worked for the NZ Post Office died in 2005.

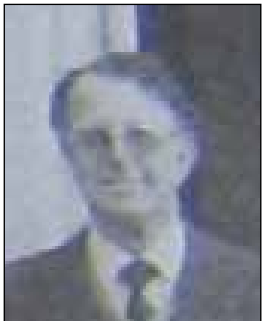


Greendale

## Harry (HG) Fletcher

Harry Fletcher was elected to the Eagles in 1981. He was a telegraphist at Ashburton in 1954 and in 1957 he was the postmaster at Culverden where he won the senior championship in 1960. He then became the Postmaster at Darfield and joined the Greendale Golf Club which he represented at Canterbury Provincial Golf Association and Central Canterbury Sub-Association meetings and became the Sub-Association secretary. His dedicated service was recognised when he was awarded life membership of Central Canterbury. Harry then moved to Riccarton and by 1981 he had retired.

## 1982



Russley

## Ian (IC) Eyles

Ian Eyles became an Eagle in Aorangi before 1974. He joined the Canterbury Eagles about 1985 and was club captain in 1991/92, president in 1993/94 and was elected their first patron of in 1999, a position he held until his death in 2001.

He was active in the Ashburton Golf Club where he was club captain in 1967 and president in 1971/72. He joined the Russley Golf Club after coming to Christchurch and served as the New Zealand Golf Association's South Island vice-president.

Ian was an oil company representative.



Rangiora

## Geoff (GG) Simpson

Geoff Simpson was a Rangiora businessman who was president of the Rangiora Golf Club in 1981/82 and joined the Eagles in 1982. He was on the Canterbury Provincial Golf Association management committee from 1979 to 1988 and vice president in 1987 but retired because of ill health and died in 1989.

Geoff had poultry farm before establishing a Brother sewing machine shop in Christchurch. He was a well recognised landscape artist.



Waitikiri

## Dick (RT) Brittenden MBE

Dick Brittenden was an Eagle from 1982 until he resigned because of pressure of work in 1997. He was president of the Waitikiri Golf Club in 1974/75.

He joined "The Press" in 1938 and was sports editor from 1955 until his retirement in 1984. He wrote sports related books particularly on cricket and reported on a number of overseas cricket tours.

Dick was awarded the MBE in 1985 for services to sporting journalism.



Rawhiti

## Terry (TG) Downey

Terry Downey has been an Eagle since 1982 and was made an honorary member when he resigned in 2019. He was president of the Rawhiti Golf Club in 1987/88 and made a life member of the Club in 1984. He is the present patron.

He was a member of the Canterbury Provincial Golf Association management committee for 15 years from 1979, the president of Canterbury in 1984 and elected a life member in 2012.

Terry worked in the advertising industry.



Harewood

### **David (DH) Lawrence**

David Lawrence was a chartered accountant and elected an Eagle about 1989. He had been the auditor for the Eagles from 1977 until 1982 and was again from 1993 until his death in 2000. He was elected an honorary member of the Eagles during the 1990s.

He was club captain of the Harewood Golf Club in 1965/67 and the president in 1968/71. He was on the Canterbury Provincial Golf Association management committee from 1962 until 1973 and president in 1967.

### **Cliff (CA) Hibbs**

Cliff Hibbs became an Eagle in Buller-Westland before 1982 when a member of the Reefton Golf Club. By 1984 he was a member and caterer at the Waitikiri Golf Club and a member of Canterbury Eagles. In 1985 he transferred to Manawatu-Wanganui Eagles and was a member of the Manawatu Golf Club. By 2002 he had joined the Linton Golf Club.

## 1983

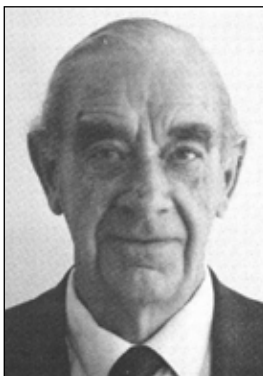


Weedons

### **Arthur (AJ) Chambers**

Arthur Chambers became an Eagle in 1983 and was vice captain in 1988/89. He was club captain of the Weedons Country Club from 1974 until 1978. He worked hard for junior golf in the Eagles, with the Canterbury Provincial Golf Association, where he was on the management committee from 1981 until 1988, and with the Central Canterbury Golf Sub-Association where he was president for two years. He was Canterbury's representative on the New Zealand Golf Foundation.

Arthur came to New Zealand from England in 1956 and became an avionic engineer at Air New Zealand where he worked for 23 years. He died in 1990.



Waitikiri

### **John (JP) O'Gorman**

John O'Gorman joined the Eagles in 1983 and gave great service as the secretary-treasurer from 1984 until 1993.

He was honorary secretary of the Waitikiri Golf Club for eighteen years from 1954 to 1972 and made a life member in 1973. He served three terms as club captain in 1974/75, 1978 and 1983 to 1988 and was president in 1980/81.

He served on the Canterbury Provincial Golf Association management committee in the 1960s and again in 1980/81 and had been president in 1962.

John who worked for NZ Post died in 1994.



Tai Tapu

### **Grant (GR) Lethaby**

Grant Lethaby, a clerk, was an Eagle from 1983 to 1994 and moved to Queensland in 1995. He was secretary of the Tai Tapu Golf Club from 1965 until 1968, club captain in 1989/90, president from 1976 to 1980 and made a life member of the Club in 1983. Grant was president and a life member of the Central Canterbury Golf Sub-Association and on the Canterbury Provincial Golf Association management committee in 1979/80. He died in 2007.



Kaikoura

### **Bryan (BT) Seddon**

Bryan Seddon was an Eagle for 30 years after joining in 1983. He held most positions at the Kaikoura Golf Club being senior champion in 1967 and 1969, grounds convenor, club captain, president in 1974/75, life member and is the present patron.

Bryan farms "Acacia Downs" which is on SH1 over the road from the Kaikoura airfield.



Akaroa

### **Barry (BJ) Brownie**

Barry Brownie became an Eagle in 1983.

He was a lamb buyer and played golf at Amberley before moving to Akaroa. Joining the Akaroa Golf Club he was club captain 1973/76, president 1976/80, a life member and the present patron. He was the senior champion three times between 1968 and 1972 and represented Central Canterbury. He has had five holes-in-one and played under his age many times.

## **1984**

### **Ian (BI) Ferguson**

Ian Ferguson was a reciprocal Eagle in 1984. He came from Invercargill where he was a member of the Southland Golf Club and was involved with the formation of the club's Oreti Sands course. He was secretary-manager of the Christchurch Golf Club from 1982 until April 1983 and transferred from the Canterbury Eagles in 1985



Hanmer Springs

### **Des (DR) Richardson**

Des Richardson was an Eagle from 1984 until 1992 when he resigned.

He joined the Russley Golf Club in 1950 and became the club captain of the Hanmer Springs Golf Club after moving there from Christchurch. He was involved in setting up the 55 years and over men's golf tournament there in the 1990s.

Des was a commercial traveller selling women's outer fashions to major stores throughout New Zealand. He died in 2009.

### **Ron (RM) Sutherland**

Ron Sutherland became an Eagle before 1974 when a member of the Reefton Golf Club in Buller-Westland. He came to Kaikoura about 1982 and was active in the golf club.



Scargill

### **Mac (MB) Henderson (1925-2000)**

Mac Henderson became an Eagle in 1984 and continued as a member until his death in 2000.

A member of the Scargill Golf Club he was the handicapper 1966/72, treasurer 1976/77, president 1979/80 and auditor 1981/84 and spent two periods as club captain.

Before farming in the Scargill Valley he had been a bank manager.



Waimairi Beach

## Alan Green

Alan Green was a motor mechanic at Scotts Motors who joined the Eagles in 1984 and was the treasurer when he died in 1997.

He was well known for his work with junior golfers and was junior convenor at the Waimairi Beach Golf Club, president there from 1977 until 1979 and elected a life member in 1986.

## 1985



Avondale

## Hugh (KH) McKay (1932-1997)

Hugh McKay was an Eagle from 1985 until he died in 1997.

He was a member of the Avondale Golf Club and served as club captain 1972/73 and 1989/91, and president 1976/80 and 1995/97. He was on the Canterbury Golf management committee from 1986 to 1989.

Hugh did an apprenticeship as a fitter and turner and then worked for WH Price & Co. and Lane, Walker, Rudkin, Ltd. and became manager of Price's.



Harewood

## Noel (NL) Bain

Noel Bain was an Eagle from 1985 until he resigned in 1994.

He was the senior champion at Harewood Golf Club in 1974 and 1976 and was a Canterbury selector for five years in the 1980s.

Noel was greenkeeper for five years at Gleniti before moving to Harewood where he was greenkeeper for 20 years.



Harewood

## Norm (NL) Howard

Norm Howard became an Eagle in 1985. He was club captain at the Harewood Golf Club in 1968/69 and president in 1971/72 and was on the Canterbury Provincial Golf Association in 1974/75.

He worked in the office of CFM meat company at Belfast and was a part time greenkeeper.



Hagley

## Dennis (DT) Warner

Dennis Warner was a foreman who became an Eagle in 1985 and transferred to the Waikato Eagles about 1996.

He was club captain of the Hagley Golf Club in 1952 and president in 1954/55. Some 20 years later he again held these positions as club captain in 1977/78 and president in 1984/85. He was elected a life member of the club in 1988. He was the senior champion at the club five times between 1952 and 1957.

In the 1950s and the late 1970s Dennis was a member of the Canterbury Golf Association management committee.



Russley

## Bob (RH) Bradley

Bob Bradley became an Eagles in 1984 when a member of the Miramar Golf Club and transferred to the Canterbury Eagles in 1985. He was greenkeeper at a number of golf clubs including Amberley, Russley, Waitikiri, Miramar, Kelvin Heights, Millbrook and Clearwater. He then worked as NZ manager for Turf and Irrigation Products for Guthrie Harvin and was one of the leading Miramar golfers where he won three senior championships. He returned to the South Island and worked on the formation of the Millbrook and later the Clearwater courses. He then joined PGG-Wrightson's and worked at the Kimihia Research Centre for 14 years before retiring in 2015.

He is a life member of the NZ Golf Course Superintendents Association.

He played for Canterbury in the 1972 and 1973 Freyberg Rosebowl tournaments and was later a selector and team manager for Canterbury. He won club championships at Cheviot in 1965, Amberley in 1967, Kaiapoi in 1969, Coringa in 1973 and 1974 and Russley in 1989.

Bob also played at Arrowtown where he won three senior championships, Kelvin Heights and is now at Kaiapoi where he was elected a life member in 2017.

# 1986



Greendale

## Bevan (BG) Begg

Bevan Begg became an Eagle in 1986 and remained a member until his death in 2007.

He was club captain of the Greendale Golf Club in 1968/69 and president from 1971 to 1974. He did a lot of work and maintenance at the club and was elected a life member in 1977.

Bevan farmed near Kirwee.

## Ray Smith

Ray Smith was president of the Kaikoura Golf Club in 1982/83 and also served as secretary and club captain. He joined the Eagles in 1986. He was living in Christchurch when he died in 1996.



Lake Coleridge

## Doug Robertson (1920-1999)

Doug Robertson farmed Mt Oakden between Lake Coleridge and the Rakaia River and although it was relatively remote he and his wife Marie were among the most regular attenders at Eagles functions. He was an Eagle from 1986 until his death in 1999.

Doug joined the Lake Coleridge Golf Club in 1956 and was secretary from 1961 to 1998. He was club captain in 1969 and made a life member in 1998.



Templeton

## Vic (LVF) Etwell

Vic Etwell was an Eagle in 1986.

He was treasurer of the Templeton Country Club, president in 1975/76 and elected a life member in 1981. He was a member of the Canterbury Provincial Golf Association management committee during the 1970s.

Vic was a cartage contractor and managing director of the Central Carrying Company and had retired by 1984.



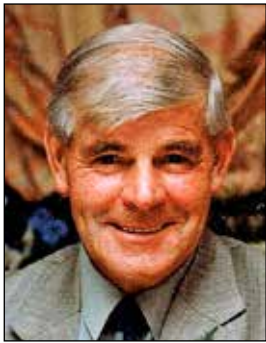
Waimakariri Gorge

## Roscoe (JR) Taggart

Roscoe Taggart was an Eagle from 1986 and was elected an honorary member when he resigned because of ill-health in 2019.

He was a foundation member of the Waimakariri Gorge Golf Club and the senior champion in 1967, 1969 and 1970. He was club captain 1976/77, treasurer, president 1980/81 and elected a life member in 1999.

Roscoe farmed near Cust and was active on the North Canterbury Golf Sub-Association being president for a period.



Waimakariri Gorge

## Neil (AN) Mehrtens

Neil Mehrtens was an Eagle from 1986 until his death in 1999. He was a farmer known for his voluntary work on the course at the Waimakariri Gorge Golf Club where he was club captain 1978/79 and president 1984/85. He was also president of the North Canterbury Golf Sub-Association.



Waitikiri

## Trevor (TC) Cleverley

Trevor Cleverley became an Eagle in 1986 and was the secretary in 1994, club captain in 1995/96 and president in 1997/98.

He was a life member of the Waitikiri Golf Club where he was club captain in 1981/82, president from 1985, and then patron.

Trevor was a bank manager and later he and his wife Glenda had Collins Bros. which sold ladies and mens fashions.

# 1987



Amberley

## Ian (IE) Frizzell

Ian Frizzell was an Eagle from 1987 until 2013/14.

He started playing golf at Rangiora and then went to Culverden where he was president of the Golf Club in 1979/80 and for a number of years was a volunteer greenkeeper.

He was president of the North Canterbury Golf Sub-Association and was instrumental in setting up the Pahau Cup competition between clubs north of the Waipara River and was for players with a handicap of 18 and above.

He now lives in Amberley.

## Miles Jones

Miles Jones was an Eagle from the Tai Tapu Golf Club or the Harewood Golf Club from 1987/88 until he resigned in 1995 when he moved to Australia as Australian Sales and Marketing manager for PDL Plastics Limited.

## 1988



Coringa

### Tom (TW) Donovan

Tom Donovan was an Eagle from 1988 until he died in 1999.

He was president of the Coringa Country Club in 1988/89 and organised their junior programme for 20 years.

He was a member of the Canterbury Provincial Golf Association management committee from 1986 until 1998 and a New Zealand Golf Association councillor 1996/98.

He worked for the NZ Refrigerating Company which became Waitaki Ltd.



Waitikiri

### Trevor (TH) Riseley

Trevor Riseley was an Eagle from 1988 until 2011. He was president of the Waitikiri Golf Club in 1982/83, on the Canterbury Provincial Golf Association management committee from 1983 to 1996 and president in 1989/90. He joined the Russley Golf Club in 1997.

With his wife Jennifa, he had the Trouser House before selling real estate and then purchasing Collins Bros. from Trevor Cleverley.

## 1989



Cheviot

### Russell (RJ) Beckett

Russell Beckett was an Eagle from 1989 until his death in 1993.

He was club captain of the Cheviot Golf Club and its president in 1985/86.

He farmed near Phoebe between Cheviot and Parnassus.



Ellesmere

### Roger (RF) Gilbert

Roger Gilbert joined the Eagles in 1989 and was elected patron in 2018.

He was club captain of the Ellesmere Golf Club in 1972/73 and the president in 1979/80. He was very involved in the development of the new 18 hole course which opened in 1972.

He played for Central Canterbury and was president of the Sub-Association in 1977/78.

He was on the Canterbury Provincial Golf Association management committee for 14 years, was president in 1987/88 and elected a life member in 2012. He represented the NZ Golf Association on the NZ Turf Culture Institute.

Roger farmed in the Killinchy area. He was president of the Ellesmere Historical Society for 22 years and has written a number of histories relating to the district.



Hagley

### **Noel (TN) Direen**

Noel Direen was elected to the Eagles in 1989 and remained a member until 2013/14. In 1982/83 he was president of the Hagley Golf Club and he was made a life member in 1996. Noel worked as a senior manager and tours manager for Midland Buses.



Hororata

### **Neil (ND) Oliver**

Neil Oliver was a farmer near Hororata and an Eagle from 1989 until 1993. He was the club captain at Hororata Golf Club in 1966/67, 1970/71 and 1989/90, the president in 1975/76 and the senior champion six times between 1962 and 1969. He was also president of the Central Canterbury Golf Sub-Association.



Kaiapoi

### **Allan (AJ) Brown**

Allan worked in a department store in Invercargill then became a NZ Railways engine driver in Oamaru before moving to Blackball about 1950 where he set up a fruiterers business and then moved to Main North Road, Papanui where he and his wife Margaret had a market garden. A member of the Kaiapoi Golf Club he joined the Eagles in 1989 and remained a member until he died in 1999. He is remembered for organising fruit trays as prizes at the Halberg tournament.



Kaiapoi

### **Jim (JE) Monk (1928-2009)**

Jimmy Monk was elected an Eagle in 1989 and as a keen fisherman provided whitebait for raffle prizes at the Halberg tournament.

He was club captain of the Kaiapoi Golf Club in 1962 and again in 1979/80, president in 1991/92 and was made a life member in 1994. He won the senior championship nine times between 1961 and 1986 and won the Amberley senior championship five times between 1962 and 1973.

Jim was a builder working with his brother, Trevor, and later he and his wife Melva had motels at Karaki Beach. He died in 2009.



Rangiora

### **John (JL) Allin**

John Allin joined the Eagles in 1989, moved to the Greenacres Golf Club and the Nelson-Marlborough Eagles in 1998, returned to Canterbury in 2010 and resigned from the Eagles in 2011.

He was Rangiora Golf Club champion for five years from 1974 to 1980 and the Amberley champion from 1974 to 1977. From 1986 to 1998 he was a member of the North Canterbury Sub-Association executive, president in 1997 and elected a life member in 1998. He was on the Canterbury Provincial Golf Association management committee between 1988 and 1991 and won the Gregg Trophy for Canterbury Golfer of the Year in 1990.

John was a car salesman and manager in Rangiora and Amberley, operations manager of the Hanmer Springs pools and accounts manager for Just Water in Nelson and now plays golf at the Pegasus Golf Club.



Hawarden

### **Ged Earl**

Ged Earl has been an Eagle since 1989.

A farmer, he won the Hawarden Golf Club senior championship eleven times between 1965 and 1996. He was the club captain in 1965/67 and again in 1987, the president in 1973/74 and a life member. He was on the North Canterbury Golf Sub-Association for 13 years and president for a period.



Templeton

### **Rex (RW) Orr (1923-2011)**

Rex Orr was an Eagle from 1989 until he died in 2011.

He played at the Templeton Country Club where he was club captain in 1986/1989, president in 1991/93 and became a life member in 1998.

Rex played rugby for Otago and became an All Black against Australia in 1949. He was an Air Force officer when he captained the NZ Combined Services from 1953 to 1955. He was a secondary school teacher when in Christchurch.

## **1990**



Amberley

### **Ian Pollock (1936-2015)**

Ian Pollock was elected an Eagle in 1990 and remained a member until he died in 2015.

He was a member of the Amberley Golf Club and won the senior championship six times between 1978 and 1994. He was club captain from 1992 to 1996 and was active in all aspects of the golf club.

Ian was married to Moana who was one of the first women Eagles in Canterbury. He was a top salesman for Lane Walker Rudkin for over 30 years.



Templeton

### **Don (DA) Harvey**

Don Harvey was an Eagle from 1990 until he resigned in 2011.

He was club captain of the Templeton Country Club in 1974/76 and served two terms as president in 1979/80 and 1996/98. He was on the Canterbury Provincial Golf Association management committee from 1979 to 1982. His wife, Heather, was president of the Canterbury Ladies Golf Association in the late 1980s.

Don was a builder who later ran a service station and then bought a farm in the Rakaia Gorge. He died in 2019.

### **John (JNB) Thomas**

John Thomas joined the Southland Eagles about 1976 when a member of the Invercargill Golf Club. He was an assistant manager in Invercargill and had retired by 1981. In the 1940s and 1950s he had been a pastry cook in Cobden. He came to Christchurch, joined the Harewood Golf Club, and was a Canterbury Eagle from 1990 until about 1993.

### **Rex (RS) Evans**

Rex Evans was an Eagle from 1990 until he resigned in 2003. He was secretary of the McLeans Island Golf Club from 1984 until 1994 and was elected a life member in 1995.

Rex had been a sales representative and branch manager.



Hawarden

### **Stan (DSR) Rivett**

Stan Rivett has been a member of the Eagles since 1990.

He was president of the Hawarden Golf Club in 1977/78, club captain in 1983/84 and is a life member. He represented the North Canterbury Sub-Association on the Canterbury management committee being a member of the committee from 1989 to 1995. In 2003 he was the inaugural recipient of the Canterbury "Volunteer of the Year".

Stan worked on farms around Oxford before farming at Hawarden and greenkeeping at the Hawarden course.

### **John (JA) McCausland**

In 1990 John McCausland was a reciprocal Eagle from Southland, retired and living with his wife Lois at 63 Regency Crescent, Christchurch. It is not known which golf club he belonged to.

He was a member of the Southland Eagles before 1974. He was a company manager living in Gore in the 1970s and the early 1980s and a member of the Gore Golf Club. He lived at Kelvin Heights before coming to Christchurch and by 1994 he was an associate member of Southland Eagles living in Alexandra.

## **1991**



Ellesmere

### **Murray (MWJ) Boon**

Murray Boon became an Eagle in 1991.

He was president of the Ellesmere Golf Club from 1983 until 1985 and made a life member in 1998. He and his wife Shirley are now the patrons of the Club. He continues to carry out maintenance at the Club and was the Canterbury "Volunteer of the Year" in 2005.

Murray farmed in the Killinchy area before retiring to Leeston.



Weedons

### **Derek (DJ) McGregor**

Derek McGregor has been an Eagle since 1991. He was club captain in 1997/98, president in 1999/2000 and apparel officer from 2008/09 until 2013. He served three terms as club captain of the Weedons Country Club, 1984, 1986/87 and 1992/93 and was president in 1989.

Derek had a shoe repair business on Lincoln Road.

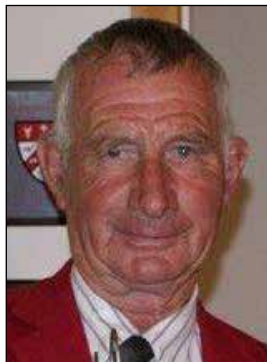


Waitikiri

### **Harry (HB) Drinnan**

Harry Drinnan was an Eagle from 1991 until he died in 2007. He was a dental surgeon who was president of the Waitikiri Golf Club in 1989/90.

## 1992



Amuri

### **Tom (TW) Morgan**

Tom Morgan became an Eagle in 1992 and was club captain from 2008 until his death in 2010. He began playing golf at the Amuri Golf Club in the early 1960s and won the senior championship twenty times between 1964 and 1992. He was the club captain on two occasions and president in 1988-89 and was made a life member.

He played representative golf for the North Canterbury Sub-Association and was president and a selector of the Sub-Association.

He also played at the Culverden Golf Club and was senior champion from 1983 to 1985.

Tom was a shearer and fencing contractor.



Coringa

### **Brian (BJ) Mairs**

Brian Mairs was an Eagle from 1992 to 2007.

He was a foundation member of the Coringa Country Club and was club captain in 1977/78. He was a Canterbury selector from 1993 until 1997.

Brian worked for the Catchment Board and Ecan for over 40 years.

### **Eric (EO) Hunter**

Eric Hunter was the Eagles auditor from 1983 until 1992 when he was made an honorary member. He died in 1992 or 1993.

He was the secretary-manager of the Russley Golf Club from 1979 to 1983 and a member of the club from 1984.



Scargill

### **Brian (BR) Williams**

Brian Williams became an Eagle about 1982 when a member of the Wairau Valley Golf Club. He moved to Masterton and the Carterton Golf Club in 1986. He joined the Canterbury Eagles in 1992 as a reciprocal member from the Wellington Eagles when he took over the Waipara Hotel. He was Scargill Golf Club club captain in 2001.

Later he had a café and tea rooms in Amberley. He resigned in the early 2000s because of ill health and then moved to Blenheim.

## 1993



Burnham

### **Bob (AJO) Hewlett, MBE**

Bob Hewlett was an Eagle from 1993 until his death in 2001. He was a member of the Burnham Camp Golf Club where he was made a life member after serving as club captain in 1981 and president in 1994.

Bob was a soldier for more than 30 years and was awarded the MBE.



Cheviot

### **Mike (MH) Fitzgibbon**

Mike Fitzgibbon has been an Eagle since 1993.

He played golf at Ellesmere before moving to Cheviot where he was club captain and president, 1992/93, of the Cheviot Golf Club. He also spent some years on the North Canterbury Golf executive.

Mike was a shearer and farmed near Phoebe.



Cheviot

### **Paul Burnett**

Paul Burnett became an Eagle in 1993 and was an associate member at the time of his death in 2013. He was the president of the Cheviot Golf Club in 1988/89 and won the senior championship ten times between 1966 and 1978.

Paul was a mechanic and company director, owning a garage in Cheviot.



Hagley

### **Rex Bull**

Rex Bull joined the Eagles 1993. He served as treasurer from 2001 to 2010 and was elected a life member in 2015. He was a member of the committee until recently.

A member of the Hagley Golf Club he was club captain in 1985 and president in 1986/87 and again in 1992/93. He was awarded life membership in 2002.

He was on the Canterbury Golf Executive for 19 years serving on the match and junior committees and as convenor of finance. In 2012 he became a life member.

Rex worked for Wright Stephenson & Co. for 20 years, seven in New Zealand and then 13 in Australia. After returning to New Zealand he worked for Wormald Fire Protection becoming the South Island Financial Controller.

## **1994**

### **Tony White-Johnson**

Tony White-Johnson became an Eagle in 1994. He was a farmer near Kirwee. He was president of the Greendale Golf Club in 1985/86 and was also a member of the Akaroa Golf Club. He died in 1995.



Rangiora

### **Ernie (EA) Gillman**

Ernie Gillman was a dairy farmer near Rangiora who was an Eagle from 1994 until 2014 the year he died. He was president of the Rangiora Golf Club in 1975/76 and elected a life member of the Club in 1994.



Rangiora

### **Bruce (FB) Leech**

Bruce Leech farmed near Rangiora and was an Eagle from 1994 to about 2014. He was on the North Canterbury Sub-Association executive and managed North Canterbury teams, on the Canterbury Provincial Golf Association management committee in 1995/96 and a life member of the Rangiora Golf Club since 1989.



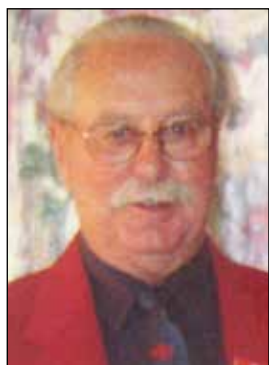
Harewood

### **Fred (FG) Shaw**

Fred Shaw joined the Eagles in 1994 and was the auditor from 2000 until 2011.

He was the treasurer of the Harewood Golf Club in 1981/82, president in 1984/85 and was a life member of the Club.

Fred, an accountant, was company secretary of Aulsebrooks for 20 years. He and his wife Marie were life members of the Christchurch Ski Club. Both died in 2019.



Hororata

### **Ian (RI) Joyce**

Ian Joyce was an Eagle from 1994 until he died in 2014. He gave long service as a member of the Hororata Golf Club as secretary 1963/73, president 1977/80 and club captain 1992 to 2000 and was a life member of the club.

Ian worked on the railways, was a coal miner for a short period and then worked in the Post Office at Hororata and Darfield.



Lincoln

### **Vince (VA) Moroney**

Vince Moroney was president of the Lincoln Golf Club in 1999/2000 and was an Eagle from 1994 until his death in 2012. He worked with Lincoln juniors, with Arthur Chambers with the Central Canterbury juniors and took over after Arthur died.

Vince was an aircraft instrument engineer and safety advisor for Air NZ and later had an optical equipment business.



Akaroa

## Alan (AC) Reynish

Alan Reynish was invited to join the Eagles in 1995. He was a member of the Little River Golf Club and its vice-president when it closed. He joined the Akaroa Club and was president in 1983/85 and was greenkeeper for a period. Alan served in the Pacific Islands and Japan during World War Two and is a life member of the RSA. He was a shearer and farmed "Seafield" at Pigeon Bay.



Avondale

## Norm (NR) Harkess

Norm Harkess was an Eagle from 1995 until his death in 2005. He was the club captain in 2001/2 and president in 2003/04. He was president of the Avondale Golf Club in 1986/87 and club captain in 1995/96. He was on the Canterbury Golf management committee from 1995 to 2000. Norm worked in security.



Coringa

## Dick (RS) Hendon

Dick Hendon joined the Eagles in 1995 and was an honorary member at the time of his death in 2017. He was the club captain in 1999/2000 and president in 2001/02. He was a member of the Weedons Country Club and their club captain in 1971/73 before moving to the Coringa Country Club and becoming club captain in 1986, 1989 and 1993. Dick worked for Guthrie Bowron.



Harewood

## George (GP) Walker (1935-2018)

George Walker was an accountant who formed Walker, Davey & Co. He was an Eagle from 1995 until 2015 when he resigned because of ill health. He was club captain of the Harewood Golf Club in 1972, president from 1974 to 1976 and a life member of the Club. Also a life member of the Canterbury Provincial Golf Association he was on the management committee for 10 years and president in 1979. From 1980 to 1985 he was on the New Zealand Golf Council and a member of the management committee. During that time he played an influential part in reorganising the financial systems of NZ Golf. He died in 2018.



Rawhiti

### **John (JWF) Kiddey**

John Kiddey was an Eagle from 1995 until 2014. He was treasurer from 1998 to 2000 and continued on the committee from 2001 until 2005.

He was club captain of the Rawhiti Golf Club in 1985/86, president in 1991/92 and made a life member of the Club in 1996.

He was a member of the Riccarton Cricket Club and played for Canterbury from 1956 until 1965. He took 141 first class wickets with best figures of 7 for 24.

John was the South Island sales representative for Spalding.



Russley

### **Ken (KW) Stacey**

Ken Stacey was an insurance manager who was an Eagle from 1995 until his death in 2013. He was president of the Russley Golf Club in 1988/89 and made a life member in 1999. He joined the Club in 1978 and was chairman of the development committee which oversaw the Boffa Miskell Partners – Bob Charles report. He chaired the new clubhouse committee which saw the Miles Warren designed clubhouse opened in 1994.



Scargill

### **Ken (KW) Gatehouse**

Ken Gatehouse was elected to the Eagles in 1995 and was the patron from 2016 until he resigned the position in 2018 but remains an Eagle.

He joined the Scargill Golf Club in 1968 and held the positions of secretary 1973/77, treasurer 1980/81, and was later club captain on two occasions. He continued to be active in course maintenance. He was senior champion in 1982, 1984, 1986 and 1988.

He was a school teacher and was a very good athlete in his younger days, specialising in the pole vault.



Waimairi Beach

### **Dave (DR) Millward**

Dave Millward has been an Eagle since 1995 and is now an honorary member. He has been junior convenor at the Waimairi Beach Golf Club and was club captain in 1987/88. He served on the Canterbury Provincial Golf Association management committee from 1991 until 1997.

Dave was a technician and became a manager at Telecom.



Bottle Lake

### **Eric (EJ) Johnston**

Eric Johnston became an Eagle in 1995 and was secretary from 1996 to 2000. He was president of the Windsor Golf Club from 1984 to 1986 and elected a life member in 1987.

Eric was a manager for the Dominion Car Co. and then had a travel agency.



Bottle Lake

### **Jim (JH) Preston**

Jim Preston came to Canterbury as a reciprocal Eagle from Otago in 1995 and was on the committee in 1997/98 and the apparel officer from 1999 until 2008. He had been a member of the Waikouaiti Golf Club and joined the Windsor Golf Club when he came to Christchurch. Jim was a retired farmer and resigned from the Eagles in 2012.

### **Mike (MR) Gilchrist**

Mike Gilchrist was a reciprocal Eagle who joined Canterbury Eagles in 1995. He died in 2005. He worked in the meat industry in the lower North Island and was an abattoir manager when a member of the Waitikiri Golf Club.

## **1996**



Amberley

### **Graham Gollan**

Graham Gollan became an Eagle in 1996 and transferred to the Buller-Westland Eagles when he moved to Reefton in 2001.

He was an active member of the Amberley Golf club and served as club captain 1987/89, and president 1991/93. From 1997 to 1999 he was president of the North Canterbury Golf Sub-Association.

He was employed at the Belfast Freezing Works as the engine driver for more than 34 years.



Kaiapoi

### **Ray (RK) Atkinson**

Ray Atkinson was a leading Canterbury golfer in the 1960s when he was runner-up in the NZ match play in 1965 and won the NZ amateur foursomes with John Durry in 1967. In 1969 he was Russley senior champion and won the Canterbury match play. He played in the Canterbury Freyberg Rosebowl team for four years.

Ray moved to Dunedin where he became an Eagle and returned to Canterbury as a reciprocal member in 1996. He was Eagles vice-captain in 1999/2000 and captain for a time in 2001 before Norm Harkess took over. He is now a member at Everglades Golf Club.



McLeans Island

### **Brian (BJ) Newsome**

Brian Newsome was an Eagle from 1996 to about 2004. He was president of the McLeans Island Golf Club from 1991 to 1994 and elected a life member of the club in 1998.

He was on the Canterbury Provincial Golf Association from 1990 until 1996 and a selector and elected a life member in 2012.

BJ was a hair dresser and played soccer for Canterbury.



Charteris Bay

## Ron (RD) Kennedy

Ron Kennedy who joined the Eagles in 1997, served on the committee for 10 years and was club captain from 2014 until 2019.

A member of the Charteris Bay Golf Club for more than 50 years he was club captain in 1982/83, president in 1991/93 and made a Life Member in 1998.

He was an active member of the Central Canterbury Golf Sub-Association for ten years and the president in 1995/96. He served 16 years on the Canterbury Golf management committee. He was involved with junior golf at all levels. In 2013 he received a Canterbury Golf Distinguished Service Award.

Ron was a sales representative.

## Bob (RA) Goodyer

Bob Goodyer was an Eagle from 1997 until about 2013. He was president of the Kaikoura Golf Club in 1998/99 and a delegate to the North Canterbury Golf Sub-Association. He was caretaker at the Kaikoura School.



Russley

## Gary (GH) Shepherd

Gary Shepherd has been an Eagle since 1997. He was club captain of the Russley Golf Club in 1988/89, president from 1991 to 1993 and made a life member in 2004 having joined the Club in 1976.

Gary and Errol Kime established Shepherd & Kime Ltd., panel beaters and painters, in 1966. He retired from the business in 2006.



Waimairi Beach

## Colin (CA) Cooke

Colin Cooke joined the Eagles in 1997 and was an efficient secretary from 2001 until 2006 and is now an honorary member.

He was president of the Waimairi Beach Golf Club from 1986 to 1988, secretary from 1992 until 1997 and made a life member in 2003.

Colin was president of the Canterbury Golf Referees Association in 1992-93. He was a painter.

## Francis Woolley

Francis Woolley was a reciprocal member from the Rarangi Golf Club in Nelson-Marlborough and was a member at Templeton from 1997 for four or five years.

## 1998



Avondale

### **Noel (NH) Hobson**

Noel Hobson has been an Eagle since 1998. He was vice-captain in 2003 and worked on the committee for six years.

He is patron of the Avondale Club where he was club captain in 1993/94 and recently has been involved in the building of the new clubhouse to replace the clubhouse damaged in the earthquakes.

He was a New Zealand hockey representative from 1954 until 1964 and played at Olympic Games at Melbourne, Rome and Tokyo where he was the vice-captain.

Noel was a painter and decorator who worked on Foodstuff supermarkets and for Trustbank.

### **John (JG) Morris**

John Morris was an Eagle from 1998 until 2001.

He was the pharmacist at Darfield and a member of the Greendale Golf Club. He was the instigator of the irrigation system on the course and was president in 1993/94.



Scargill

### **Peter (PA) Inkson**

Peter Inkson became an Eagle in 1998 and served as vice-captain in 2016/17.

A member of the Scargill Golf Club he has served in most positions in the club. He was handicapper for five years, club captain for five years, president in 1995/96 and treasurer for 18 years. He is currently the part time greenkeeper. He won four senior championships between 1987 and 1998. He was on the North Canterbury Sub-Association for three years.

Peter farms in the Omihi Valley.

## 1999



Coringa

### **Gavin (GT) Paterson**

Gavin Paterson became an Eagle in 1999, was vice-captain in 2005 and has been the apparel officer since 2013.

After retiring from the partnership with his brothers at Paterson Tyres he worked as a greenkeeper at Coringa for more than 12 years and since then he has carried on as a volunteer worker. He is the patron at Coringa and a life member of the Club.

He has been a selector for Canterbury and selector and manager of Canterbury Freyberg Masters teams.



Cheviot

### **Bill (WN) Archibald**

Bill Archibald was a reciprocal member from the Invercargill Golf Club who came to Cheviot in the late 1990s. He joined the Southland Eagles about 1985.

He was a pharmacist and was president of the Cheviot Golf Club in 2005.



Harewood

### **Les (LRD) Scott**

Les Scott was an Eagle from 1999 until 2015 or 2016. He died in 2019.

He was the patron and a life member of the Harewood Golf Club where he was club captain from 1993 until 1995 and president in 1996-97.

He was a teacher and became Principal of South Intermediate School.



Kaiapoi

### **Trevor (TW) Bayliss**

Trevor Bayliss and his wife Alison established Bayliss Nurseries at Woodend. He was an Eagle from 1999 until his death in 2006.

He had been club captain of the Kaiapoi Golf Club in 1978 and was president in 1981 and again in 1993/94. He was elected a life member in 2002.

### **Brian (BH) O'Malley**

Brian O'Malley joined the Eagles in 1999 and was a member for five or six years.

He became a member of the Christchurch Golf Club in 1972 and after Bill Green died he was appointed secretary of the Canterbury Provincial Golf Association, a position he held from 1974 until he retired in 1986. Like Bill he was a sharebroker.

### **Ray (RJP) Howe**

Ray Howe was an Eagle from 1999 until he resigned in 2005 and moved to Australia. He was a member of the Templeton Golf Club.

## **2000**



Ellesmere

### **David (DF) Morrish**

David Morrish was elected to the Eagles in 2000 and was active at Halberg tournaments.

He began golf at the Lincoln Golf Club where he was club captain in 1956/58, 1962/65 and 1974/76 and won the senior championship in 1966. He was a member of Lincoln teams that had success in the Patterson Cup, the Ashby-Berg trophy and the Norton Frances Cup. He transferred to the Ellesmere Golf Club where he was president in 1991/92 and a life member since 2006.

Dave farmed the Morrish family property at Broadfields which has been in the family for more than 150 years. He is a past president of the Lincoln and Districts Historical Society.



Hororata

### **Stuart (SA) Oliver**

Stuart Oliver is a farmer and brother of Neil Oliver and has been an Eagle since 2000.

He was club captain of the Hororata Golf Club in 1979/80, president from 1993 to 1996 and was made a life member in 2013. He won the senior championship in 1987, 1988, 1993 and 1999.

Stuart was the Central Canterbury Golf Sub-Association president in 1984 and is a life member of the Sub-Association. He was on the Canterbury management committee from 1983 to 1988.



Templeton

### **Barry (BR) Watts**

Barry Watts was an Eagle from 2000 to 2010. He was president of the Templeton Country Club in 1990/91 and elected a life member in 2012. He was a member of the Canterbury Provincial Golf Association management committee from 1985 until 2004, president in 1995/96 and became a life member in 2004. He was a New Zealand councillor from 1998 to 2004. Barry was a hydraulic engineer who died in 2016.



Bottle Lake

### **Craig (CA) Allan**

Craig Allan was an Eagle from 2000 to about 2016/17. He was the club captain of the Windsor Golf Club in 1990/91 and president from 1993 to 1995. He was a member of the Canterbury Provincial Golf Association management committee from 1998 to 2006. Craig had a shoe shop and repaired shoes.

## **2001**



Greendale

### **Ken (KRB) Shipley (1931-2017)**

Ken Shipley joined the Eagles in 2001 and remained a member until his death in 2017. He was president of the Greendale Golf Club in 1997/98 and spent a lot of time at working bees and fundraising for the club. In 2005 he was made a life member. In 2008 he received the Canterbury "Volunteer of the Year" award. Like his brother, George, who was also an Eagle, he farmed in the Greendale district and was one of the top Texel stud sheep breeders in New Zealand.



Hanmer Springs

### **Brian (BF) Pool (1935-2013)**

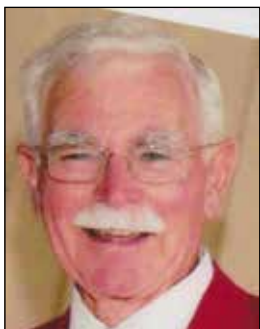
Brian Pool was elected to the Eagles in 2001. He was patron and a life member of the Hanmer Springs Golf Club and chaired the greens committee. Brian was a builder and chaired the committee that built the Hanmer Springs Sports Pavilion and was a member of the local Lions Club. He was also an active tennis player. He died in 2013.



Rangiora

### **Bill (WT) Snellex**

Bill Snellex was an Eagle from 2001 until he died in 2017. He was the Rangiora Golf Club president from 1992 until 1994 and elected a life member in 1998. He played rugby for Canterbury Country. Bill was a butcher and later had a fish and chips shop in Rangiora.



Richmond Hill

### **David (DAB) Doak**

David Doak was elected an Eagle in 2001 and since then has been on the committee for nine years and served as convenor of the Halberg tournament for five years.

He has been a member of Richmond Hill Golf Club since 1958 and has held the positions of secretary, club captain, president and was made life member in 1997. David joined the family electrical contracting firm of J. D. Doak & Co. Ltd in 1957 and served as electrician and then manager. After selling the firm in 1986 he worked for the next 17 years as storeman at Plastic Wholesalers Ltd.

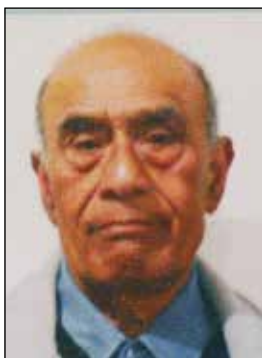


Harewood

### **Bill (WM) Southgate**

Bill Southgate was an Eagle from 2001 until 2003. He joined the Russley Golf Club in 1970 and was club captain 1990/91, and president 1991/93. He was a member of the Canterbury Provincial Golf Association management committee from 1988 until 2002, the president in 1999/2000 and made a life member in 2012.

Bill worked in radio and television.



Waimairi Beach

### **Ron Fogalele**

Ron Fogalele was an Eagle from 2001 until his death in 2010. He was junior convenor at the Waimairi Beach Golf Club, their club captain in 1994/95 and was elected patron in 2001 and a life member in 2003.

Ron worked as a watersider at Lyttelton.



Waimairi Beach

### **Mike (MJ) Hurley**

Mike Hurley became an Eagle in 2001, was club captain in 2003/04 and again in 2010/11, president in 2005/06 and 2012/13, and remained a member until he died in 2015.

He was an active member of the Waimairi Beach Golf Club being secretary from 1982 to 1988, president in 1998/2001, elected a life member in 2003 and was club captain in 2009/10.

Mike was president of the Canterbury Golf Referees Association in 1990-91. He worked for the Customs Department.



Waitikiri

## Mike Davies

Mike Davies has been an Eagle since 2001. He was Waitikiri Golf Club club captain from 2000 until 2003 and has been vice captain since 2003.

He has been involved with the NZ Lefties on a regional basis. He has been involved with the NZ Electrical Industry Golf since 1995 and is on the executive as South Island delegate. He was made a life member of NZ Electrical Golf in 2017..

Mike was an industrial electrician and managed the electrical switch gear company Kraus & Naimer for 40 years before retirement.



Waitikiri

## John Thompson

John Thompson is a hairdresser who joined the Eagles in 2001. He has been a member of the Waitikiri Golf Club since 1965 and was club captain from 1998 to 2000.

He was on the Canterbury Provincial Golf Association management committee from 1997 until 2010 and has been a member of the executive committee since then. He was president of Canterbury in 2005/06.

# 2002



Amberley

## Jim (KG) Townshend

Jim Townshend has been an Eagle since 2002 and has been club captain 2005/06 and president 2007/09.

He was president of the Amberley Golf Club in 2000/01 and on the greens committee for four years.

He was on the North Canterbury Sub-Association executive from 1998 until 2005 and a member of the Canterbury Golf management committee from 2002 to 2006.

Jim had a clothing manufacturing business and later farmed near Amberley.



Akaroa

## Edgar (ES) Henderson

Edgar Henderson joined the Eagles in 2002.

He played at the course above Akaroa before joining the Akaroa Golf Club playing at the Duvauchelle course where he was club captain in 1997/98.

He now belongs to the Lincoln Golf Club and has been scoring below his age since 2010.

Ed was originally from the Chatham Islands and farmed on Banks Peninsula but had to give up farming. He went into the bed making business buying what had been Clegg Bros. It is now Dreamwool Beds making woollen mattresses.



Coringa

### **Max (GM) Milesi**

Max Milesi was elected an Eagle in 2002 and was vice-captain in 2008.

He joined the Coringa Country Club in 1978, was their club captain in 1999/02 and is a life member. For ten years he was on Canterbury Golf management committee, selected and managed Canterbury junior teams and was president in 2007/09. In 2012 he became a life member of Canterbury.

He was a tutor at the Christchurch Technical Institute for 30 years and worked for the United Nations International Labour Organization.



McLeans Island

### **Ken (KL) Williams**

Ken Williams was an Eagle from 2002 until his death in 2010. He was club captain of the McLeans Island Golf Club in 1994, president 1996/98 and elected a life member of the club in 2005.

Ken was an electrician for more than 40 years and worked for T.L. Jones Ltd.

## **2003**



Kaiapoi

### **Doug (RD) Williams**

Doug Williams became an Eagle in 2003 having been president of the Kaiapoi Golf Club in 1989/90 and chair of the Board in 2001/2002. He was chair of the Centennial committee in 2007. He resigned from the Eagles in 2017 because of back problems.

Doug joined the police force in 1961 and served with the United Nations Peacekeeping Forces in Cyprus between 1965 and 1967. He was a Detective Sergeant in the Dunedin C.I.B. and playing at the Chisholm Park Golf Club when he became the Racecourse Inspector covering the South Island and moved to Kaiapoi in 1980.



Bottle Lake

### **John (JW) Hoare**

John Hoare was an Eagle from 2003 until he resigned in 2008. He was the club captain of the Windsor Golf Club from 1992 to 1994 and president in 1996/98. In 2013 he was elected a life member of the Club.

John completed a carpenter and joiner apprenticeship and was a builder.



Burnham

## **George (GA) Stringer (1946-2017)**

George Stringer became an Eagle in 2004 and continued until his death in 2017. He became secretary in 2009 and attended eight AGMs and 96 committee meetings before he retired in 2017. He was the senior champion at the Burnham Camp Golf club in 1974 and 1988 and the club captain in 2005/07 and in 2011.

He played a leading role in the Central Canterbury Golf Sub-Association and became a life member in 1999. In 2005 he was the Canterbury "Administrator of the Year".

George was in the education section of the NZ Army.



Christchurch

## **Ken Fergus**

Ken Fergus has been a member of the Eagles since 2004

He joined the Christchurch Golf Club in 1995, became a member of the Club Board from 1999 to 2009 and was president in 2010/12.

He was appointed a director of New Zealand Golf in 2011 and was a member of the board of New Zealand Golf from 2013 until 2015.

Ken is a chartered accountant.



Hororata

## **Neil Robertson**

Neil Robertson is the son of Doug and Marie Robertson of Lake Coleridge and was club captain of the Lake Coleridge Golf Club from 1989 until it closed in 2001. He became an Eagle in 2004, was club captain in 2012/13 and has been president since 2014.

He played for Cheviot when working in North Canterbury. He won the Hororata senior championship in 2010 and was Waimakariri Gorge champion in 2016. He was club captain at Hororata Golf Club in 2006/08 and president in 2011/12.

He played Woodward Cup for both North and Central Canterbury and played for Canterbury in seniors and masters golf.

Neil and his wife Margaret farmed Mt Oakden and then in the Wairiri Valley before retiring to Darfield.



Lincoln

## **Don (DJ) Tucker**

Don Tucker has been an Eagle since 2004 and was Lincoln Golf Club club captain in 1977/78 and for some years was the greens convenor.

He farms near Lincoln.

## 2005



Amuri

### Arthur Pawsey

Arthur Pawsey farmed and was the mailman in the Amuri area and was president of the Amuri Golf Club in 1992-93.

He joined the Eagles in 2005 and transferred the Aorangi Eagles when he moved to Tinwald in 2008.



Kaiapoi

### Tom (TD) Whitaker, BEM

Tom Whitaker began his golf career at the Burnham Camp Golf Club when serving in the New Zealand Army and was awarded the British Empire Medal. He was senior champion there in 1982, 1984 and again in 1991. He was on the Canterbury Provincial Golf Association management committee from 1996 to 1999 when he became the Chief Executive Officer a position he held until 2006. In 2006 his work was recognised when he received the Canterbury "Administrator of the Year" award. He was the first secretary-manager of the Kaiapoi Golf Club from 1994 to 1998, club captain in 2007/09 and again in 2011/12 and junior convenor from 2006 until 2018. He was elected a life member in 2011.

Tom was elected to the Eagles in 2005 and was secretary from 2006 to 2009 and president in 2010/2011. He then spent four years as junior and senior vice-president of New Zealand Eagles and in 2016 he began a two year term as New Zealand president, the first Canterbury Eagle to hold the office.



Rawhiti

### Trevor McCaughan

Trevor McCaughan was elected an Eagle in 2005, was on the Canterbury committee in 2006 and the club captain in 2007. He was president of the Rawhiti Golf Club from 2004 until 2006 and was elected a life member of the Club.

Trevor and his wife, May, owned Tasman Traders, a secondhand clothing business in Sydenham. He died in 2015.

### Bob (TD) Ledingham

Bob Ledingham was an Eagle from 2005 until he died in 2009. He was a member of the Russley Golf Club and their club captain in 2006/07.

### Don (DR) Law

Don Law, a reciprocal member, came to Canterbury Eagles from Aorangi in 2005. He had been a member of the Pleasant Point Golf Club and joined the Weedons Country Club. He moved to Nelson about 2010.

Don farmed in the area south of Auckland and was an Auckland Eagle from before 1974 until the 1980s.

## 2006



Avondale

### Gary Forster

Gary Forster became an Eagle in 2006 and has organised and run the Eagles Halberg tournaments in recent years.

He was club captain of the Avondale Golf Club from 2004 to 2007. After the earthquakes he moved to Rangiora where he now belongs to the golf club.

Gary worked for NZ Railways and then in the retail trade.



Lincoln

### Maurice Henderson

Maurice Henderson has been an Eagle since 2006. He joined the Lincoln Golf Club more than 50 years ago and was club captain in 1989/90 and served on the committee. He has been regularly beating his age at golf since 2011.

Morrie was a fitter and turner and worked for Associated British Cables.

## 2007



Hanmer Springs

### David (DW) Stead

David and Glenys Stead were joint secretary-managers of the Hanmer Springs Golf Club before David became the assistant greenkeeper and Glenys carried on as secretary-manager for a total of 15 years. David was on the Golf Club committee for 12 years and served as club captain. He was the senior champion in 2001, 2003 and 2007 and was on the North Canterbury Golf Sub-Association from 1998 to 2002. He became an Eagle in 2007.

He played senior rugby for Belfast, is a life member of the Riccarton Cricket Club and represented Canterbury at cricket between 1969/70 and 1985/86 as a leg spinning all-rounder.

Before 1990 he was an orchardist and has been the assistant greenkeeper at Hanmer Springs and at the Harewood Golf Club.



Cheviot

### Stephen (SAJ) Hill

Stephen was an Eagles member from 2007 to 2012.

He has been a greenkeeper for 28 years at Cheviot, Rangiora, Greymouth and now at Hanmer Springs Golf Club where he is on the committee. He was president of the North Canterbury Golf Sub-Association from 1999 to 2001 when he moved to Greymouth.

Steve was the senior champion at the Cheviot Golf Club for 17 years between 1975 and 1996 and won the Hanmer Springs title in 2006 and 2011.



Harewood

### **Allan (AI) Bilbrough**

Allan Bilbrough was a member of the Eagles from 2007 to 2015 and a member of the committee in 2010. He was president of the Harewood Golf Club in 1994/95 and the club captain in 2006. He was on the Canterbury Golf management committee for four years. Allan who died in 2019 aged 83 years was the Senior Field Officer of the Lincoln University's Farm Advisory Service.



Templeton

### **Kel (KL) Doolan**

Kel Doolan has been an Eagle since 2007 and the auditor since 2014. A member of the Templeton Country Club he was on the Canterbury Provincial Golf Association management committee from 2002 until 2007. He was president of the Canterbury Golf Referees Association in 2000/01 and is a life member of the Association.

Kel was a banker with Westpac who became regional manager for the southern region of the South Island and served the bank for three years in Papua New Guinea.



Waimakariri Gorge

### **Brian (BF) Hawkins**

Brian Hawkins has been an Eagle since 2007. He was the senior champion at the Waimakariri Gorge Golf Club in 2006, 2007 and 2013. He has been their club captain, 2000/01, and president, 2006/07, and has been on the course committee for many years. He has represented the Club on the North Canterbury Golf Sub-Association.

Brian was a farmer near Springfield and is now semi-retired near Darfield.



Hagley

### **Brian (BJ) Boomer**

Brian Boomer became an Eagle in 2007 and was vice-captain in 2009/10. He resigned after an accident prevented him playing golf.

He was a member of the Hagley Golf Club and was the secretary-treasurer for a period. Brian was a commercial traveller for the plastics division of the packaging company UEB.

## 2008



Hawarden

### Max Walker

Max Walker joined the Eagles in 2008.

He farmed near Dunsandel and played golf at Ellesmere for 20 years before moving to Hawarden where he is contractor. He was club captain of the Hawarden Golf Club in 2001/03 and president in 2009/10. He has been president of the North Canterbury Golf Sub-Association and has been on the Canterbury management committee and executive since 2006. He was president in 2012/14. Max has been a director of NZ Golf.



Templeton

### Ray Porter

Ray Porter was a reciprocal member from the Marlborough Golf Club in Nelson-Marlborough in 2008. He joined the Templeton Country Club and was the Canterbury Eagles treasurer from 2011 until 2016 when he became the New Zealand Eagles secretary-treasurer for a two year term.

Ray was a stock agent with Dalgety's and later the Alliance meat company and farmed in Southland.



Scargill

### Peter (PA) Burnett

Peter Burnett was elected to the Eagles in 2008 and became vice-captain in 2014/15. He has been the treasurer since 2016. He was a member of the Greendale Golf Club where he was course convenor and on the committee for six years before joining the Scargill Golf Club in 2001. He was also course convenor at Scargill and was president in 2004/05.

After he moved to Lincoln he joined the Ellesmere Golf Club.

Peter was a top competitive shearer and a farmer. He worked for the United Nations Food and Agriculture Training Organisation in Chile teaching shearers.

## 2009



Amberley

### Moana Pollock

Moana Pollock was one of the first two women to be elected an Eagle in Canterbury when she joined the Eagles in 2009.

She played at the Scargill Golf Club where she won the senior championship for three years between 1967 and 1970. She has an outstanding record as a leading Canterbury golfer and represented the province in the New Zealand Russell Grace teams event and was in the ladies masters team for nine years. She broke the course record at Hanmer Springs, Rangiora, Amberley and Everglades and equalled it at Amuri.

After joining the Amberley Golf Club she won the senior championship 33 times between 1973 and 2007. She is a life member of the club and was women's club captain in 1988/89. She has taught many the basics of golf and assisted in the development of some of Canterbury's leading juniors. Mo was Canterbury Golf Volunteer of the Year in 2003.



Waimairi Beach

## Val Mardon

Val Mardon was one of the first woman Eagle in Canterbury when she was elected in 2009 and was a member of the committee from 2010 until 2014. She played a leading role in organising the Halberg Tournament for a number of years.

She was the ladies secretary at the Waimairi Beach Golf Club and on the ladies committee for 15 years. She was active in organising and coaching their junior golfers.

Val had been ladies captain at the Rawhiti Golf Club and their senior champion.

## 2010



Culverden

## Mike (MDF) Satterthwaite

Michal (Mike) Satterthwaite became an Eagle in 2010.

In 2007 he was senior champion at the Culverden Golf Club where he served over 20 years on the committee and was president in 2009/10. He was Culverden "Player of the Year" in 2014.

Mike farms in the Lowery Peaks range near Culverden.



Ellesmere

## Ray Anderson

Ray Anderson became an Eagle in 2010.

He is a member of the Ellesmere Golf Club where he was club captain 1997/98, president 2003/04, and was made a life member in 2014. He has been course convenor for the last ten years and has been responsible for organising the clean-up of the many trees blown down on the course by windstorms.

Ray was the County Engineer for the Selwyn District Council.



Hawarden

## Keith Yorston

Keith Yorston has been an Eagle since 2010. He has been treasurer and handicapper of the Hawarden Golf Club, was club captain in 1996/97 and again in 2004/05, president in 2000/02 and is a life member of the Club.

Keith had a bus company in Hawarden and is now retired.

## Dennis McCabe

Dennis McCabe came to Canterbury as a reciprocal member from the Motueka Golf Club in Nelson-Marlborough in 2010 and transferred to the Rotorua Golf Club in the Bay of Plenty in 2014. He was a member of the Templeton Golf Club.



Waimairi Beach

## John (JC) Patterson

John Patterson was a reciprocal Eagle from Aorangi in 2010 when he joined the Waimairi Beach Golf Club. He had joined the Eagles in 1986 when a member of the Ashburton Golf Club where he had been club captain 1986/87, and president 1997/98 and again in 2005/06 and was a life member. He was a New Zealand selector and manager and chaired the New Zealand Golf Association Board.

John had a wool-scouring business in Ashburton and resigned from the Eagles in 2013.

# 2011



Amberley

## John Little

John Little was an Eagle from 2011 until 2017.

He took up golf after retiring from farming and was on the Amberley Golf Club committee for eight years from 2002. He was the house manager and organised the sponsorship for the club's annual watering tournament for many years.



Culverden

## Peter Jones

Peter Jones is a reciprocal Eagle from Buller/Westland where he was president of the Greymouth Golf Club and was general manager of Canterbury Meat Packers works in Greymouth.

He joined the Culverden Golf Club and the Canterbury Eagles in 2011. He and Sue have the Culverden Court Motels.



Harewood

## Michael (MA) Stanley

Michael Stanley joined the Eagles in 2011. He has been on the greens staff at the Harewood Golf Club and served on committees there for more than 20 years including being club captain from 1988 to 1990. He was involved with Presidents grade golf for more than 30 years.

Mike was a supervising technician with Telecom.



Russley

## Stephen Kilpatrick

Stephen Kilpatrick was an Eagle from 2011 until 2014 when he resigned because of his work load with Canterbury Golf and his business, Electionnz.com Ltd. He has been a member of the Russley Golf Club since 2002.



Weedons

## Warren Houghton

Warren Houghton has been an Eagle since 2011. He was club captain of the Weedons Country Club from 2003 until 2010 and was elected a life member.

He was on the Central Canterbury committee for many years and on Canterbury Golf management committee from 2004 to 2012 and on the executive committee since 2012. In 2014 he received a Canterbury Distinguished Service Award.

Warren worked for 33 years in the oil industry and is now operations manager for Harcourt Insulation 2006 Ltd.



Waimakariri Gorge

## Alf (AH) Blatch

Alf Blatch joined the Eagles in 2011. He was club captain 1996/97, and president 2000/01, of the Waimakariri Gorge Golf Club, had many years on the course committee including a second stint as course convenor from 2016 to 2018, and has been a delegate to the North Canterbury Golf Sub-Association. He remains a dedicated volunteer convening Tuesday golf and helping in course maintenance.

Alf farmed in View Hill for most of his life and is now semi-retired and lives on a small block near Oxford.

# 2012



Kaiapoi

## Richard Howaniec

Richard Howaniec was a Canadian dental surgeon who came to New Zealand about 1999 and joined the Kaiapoi Golf club where he worked with juniors, attended working bees and organised fundraising raffles. He was an Eagle for a short time in 2012/13.



McLeans Island

## **Annette Laugesen**

Annette Laugesen has been a Eagle since 2012.

She was ladies vice-captain and ladies captain of McLeans Island Golf Club for many years and president of the Club in 2006/2008, the club captain from 2014 to 2017 and was made a life member in 2008. She was senior champion for five years between 1983 and 2002. Annette was vice president of Canterbury Women's Golf Association 2000/2001 and president 2002/03.



Rangiora

## **Richard (RD) Davison**

Richard Davison was made an Eagle when a member of the Heriot Golf Club in Otago where he was on the committee for 40 years and was club captain, course supervisor, president and a life member. He was also president of both the South Otago Golf Sub-Association and the Otago Golf Association.

As a lefthander he won the New Zealand championship in 2003 and 2009, was New Zealand president in 2008 and made a life member of the National Association in 2017. He is the World Chairman for lefthanded golfers which has taken him and his wife, Judy, around the world.

Richard farmed in West Otago for 50 years and was involved in the local transport company before moving to Rangiora in 2012 when he joined the Rangiora Golf Club and the Canterbury Eagles. He has commercial property in Christchurch.

# **2013**



Amberley

## **Annette Freeth**

Annette Freeth joined the Eagles in 2013.

She was women's vice-captain, at the Amberley Golf Club 1998/99, club captain 2000/02, vice-president 2003, president 2004/06 and treasurer 2007/15.

She was on the Canterbury Golf management committee from 2007 to 2010 during the women's and men's amalgamation and vice-president of Canterbury in 2007.

Annette was a telephonist with NZ Post.



Cheviot

## **John Prebble**

John Prebble became an Eagle in 2013 and has been on the committee for the last three or four years. He played at Harewood from 1964 to 1971 when he joined the Templeton Golf Club where he won the senior championship five times between 1974 and 1981. He played 133 Woodward Cup matches and has been successful in Canterbury championships.

He joined the Cheviot Club in 1996. He has won the senior championship five times between 1997 and 2017. In 2012/13 he was the club president and is the course convenor.

He was on the North Canterbury Sub-Association for several years and played for their Masters team.

John bought the Four Square store when he went to Cheviot and ran it until 2017 when he retired.



Clearwater

## Geoff Saunders

Geoff Saunders joined the Eagles in 2013 after a distinguished career as Canterbury's leading golfer and contributing to Canterbury and New Zealand Golf as an administrator.

He won both the Canterbury match play and stroke play titles twice and was a member of seven Canterbury teams at the Freyberg Rosebowl competition from 1973 to 1979 including 1976 when Canterbury won the title at Timaru. He was a member of the New Zealand under 21 team in 1974/75. He was successful at New Zealand Open Championships winning both the Bledisloe Cup for the leading amateur in the Open and the Jellicoe Cup for the low round of the tournament, amateur or professional.

A member of the Christchurch Golf Club for more than 50 years he won the senior championship in 1976 and 1978 and played 103 Woodward Cup matches. He also played for Charteris Bay, Central Canterbury and is now at Clearwater.

Geoff was the honorary solicitor for Canterbury Golf from 1993 to 2010 and on the management committee 1998/2000 and was elected a life member in 2012. He was a director of NZ Golf.

Geoff joined father's legal firm of Saunders & Co in 1976. He retired as managing partner of the firm in 1998 and formed a commercial law firm, Geoff Saunders & Associates which became Saunders Robinson Brown. He retired in March 2018.



Lincoln

## Rob Phiskie

Rob Phiskie came to Canterbury in 2013 as a reciprocal member from the Grande Vue Golf Club in Aorangi where he had been an Eagle since 2007. He was club captain and president of Grande Vue and a past president of the Aorangi Golf Association. He joined the Lincoln Golf Club and then the Weedons Country Club.

Rob was the farm operations manager for Ag Research at Lincoln and the Winchmore Research Farm near Ashburton. In 2011 he completed the Coast to Coast with his daughter Melanie. He died in 2018.



Tai Tapu

## Basil Macpherson

Basil Macpherson became an Eagle when a member of Temuka Golf Club in 2008 and transferred from Aorangi to Canterbury in 2013. He resigned in 2014 because of a change in circumstances. Basil had been a member of golf clubs at Otatara, Heriot, Waikaka, Farlie, where he was club captain, and then Temuka where he was course supervisor.



Waimakariri Gorge

## Robbie (RE) Bell

Robbie Bell became an Eagle in 2013. He was club captain of the Waimakariri Gorge Golf Club in 2002/03 and president in 2008/09. He was on the North Canterbury Golf Sub-Association executive for 10 years where he was a selector and involved with junior coaching and was president from 2001 to 2003.

Robbie worked for Speights in Te Anau before moving to Governors Bay and then Oxford where he farmed and worked for a local transport company.



Cheviot

## **Stuart (SJ) Anderson**

Stuart Anderson was elected an Eagle in 2014. He had been the club captain of the Cheviot Golf Club and its president in 1994/95. He was on the North Canterbury Sub-Association committee for 12 years and the president from 2003 to 2005. Stuart farms "Black Rock" in the Ethelton Valley.



Rawhiti

## **Trevor (TW) Morris**

Trevor Morris has been an Eagle since 2014. He has served as secretary and as treasurer of the Rawhiti Golf Club. In 2009/10 he was president and has been elected a life member of the club. He has been self-employed and worked as an accountant and for data com.



Russley

## **Maurice Ford**

Maurice Ford has been an Eagle since 2014 and has been a life member of the Russley Golf Club since 2012. He began playing at Bottle Lake. He was Canterbury "Volunteer of the Year" in 2014. He is also a life member of both the Sydenham Football Club and the Canterbury Master Plumbers. Maurice had a plumbing and gasfitting business for 42 years.



Templeton

## **Murray Allott**

Murray Allott began playing golf at the Gore Golf Club and joined the Templeton Golf Club in 1993 after coming to Canterbury. He was president of Templeton from 2001 until 2007 and has been patron since 2013. He was elected an Eagle in 2014. Murray is a chartered accountant who specialises in insolvency.

## 2015



Akaroa

### Keith Vogan

Keith Vogan became an Eagle in 2015.  
He was club captain at the Akaroa Golf Club in 1978/80 and president in 1981/83.  
He was on the Canterbury management committee for eight years. In 1984/85 he was president of the Central Canterbury Sub-Association and became a life member.  
Keith farms at Duvauchelle.

## 2017



Cheviot

### Colin Harrison

Colin Harrison joined the Eagles in 2017.  
He has been club captain of the Cheviot Golf Club, was the president in 2003/04 and won the senior championship in 2018.  
He farms near Spotswood.



Ellesmere

### Chris Fox

Chris Fox worked for the Maori Affairs Department in the North Island for more than 30 years before he moved to Christchurch and joined the Ellesmere Golf Club. He was Club president in 2013/14 and was elected to the Eagles in 2017. He is a member of the Eagles committee.



McLeans Island

### Warren Davis

Warren Davis became an Eagle in Southland where he was president of the Mossburn Golf Club for five years. He came to Canterbury as a reciprocal member in 2017 and joined the McLeans Island Golf Club. He was the senior champion in 2017 and is in his third year as club captain.  
He became Eagles captain in 2019.  
Warren was sheep farming in the Te Anau area.



Scargill

### **Stuart (SJ) Loe**

Stuart Loe is a farmer in the Scargill Valley who was elected to the Eagles in 2017. He has been club captain and president, 2015/17, of the Scargill Golf Club and chairs the building committee which is completing a new clubhouse.

Stu played rugby for Canterbury from the late 1980s to 1999 and was a member of the original Crusaders team in 1996. He continued in the team in 1997 and again in 1998 when they won the Super Rugby competition. He was then involved with the Glenmark Rugby Club as club captain and president.

## **2018**



Amberley

### **Bruce (BM) Yates**

Bruce Yates became an Eagle in 2018.

A member of the Amberley Golf Club he was vice-captain 2008/09, club captain from 2010 to 2012, vice-president 2014/15 and president from 2015 to 2017..

Bruce moved to Amberley in 1983 as County Engineer to the Hurunui County Council and continued in the equivalent role to the subsequent District Council until his retirement.



Waimakariri Gorge

### **Margaret Robertson**

Margaret Robertson is the wife of Neil and became an Eagle in 2018. She was secretary for the Halberg tournament for about four years and became Eagles' secretary after George Stringer resigned from the job.

Margaret was secretary of the Lake Coleridge Golf Club for three years and secretary at Hororata from 2010 until 2015. She is now a member at the Waimakariri Gorge Golf Club.

## **2019**



McLeans Island

### **Alan Smythe**

Alan Smythe became an Eagle in 2019.

He has been a McLeans Island Golf Club member for over 20 years and a volunteer worker on the course. He has also been involved with soccer and cricket.

Alan's working life has been mainly in accounting in the travel and tourism industries.



Waimairi Beach

## **Ann Glading**

Ann Glading was elected an Eagle in 2019.

She was ladies club captain at the Waimairi Beach Golf Club three times, 1984/86, 2010/13 and 2015 until 2017.

Ann worked in clerical administration including at Inland Revenue.



Honorary

## **Sir Bob Charles**

Sir Bob Charles was elected an honorary member of the Canterbury Eagles about 1992. After moving to Christchurch from Masterton he joined the Christchurch Golf Club and was in the first Canterbury team to win the Freyberg Rosebowl in 1957.

After turning professional he wrote himself into the history of the game when he won the British Open in 1963, the first left hander to win a major. He is New Zealand's greatest golfer.

He bought a farm near the Waimakariri Golf Club and now lives at Clearwater.

## Patrons

1999 - 2001	Ian Eyles
2002 - 2010	Alan Barley
2011 - 2015	Murray Stanley
2016 - 2017	Ken Gatehouse
2018 -	Roger Gilbert

## Presidents

1969 - 1971	John Bull
1972 - 1974	Ray Townshend
1975 - 1976	Richard Hamilton
1977 - 1978	Cedric Penlington
1979 - 1980	Stuart Hunt
1981 - 1982	Alf Dyhrberg
1983 - 1984	Maurie Childs
1985 - 1986	Alan Brown
1987 - 1988	Reg Faulls
1989 - 1990	Alan Barley
1991 - 1992	Colin Walker
1993 - 1994	Ian Eyles
1995 - 1996	Jim Gregg
1997 - 1998	Trevor Cleverley
1999 - 2000	Derek McGregor
2001 - 2002	Dick Hendon
2003 - 2004	Norm Harkess
2005 - 2006	Mike Hurley
2007 - 2009	Jim Townshend
2010 - 2011	Tom Whitaker
2012 - 2013	Mike Hurley
2014 -	Neil Robertson

## Club Captains

1969 - 1973	Ray Townshend
1974 - 1979	Bob Milne
1980 - 1981	Maurie Childs
1982 - 1983	Alan Brown

1984 - 1986	Reg Faulls
1987 - 1988	Alan Barley
1989 - 1990	Colin Walker
1991 - 1992	Ian Eyles
1993 - 1994	Alan Tillson
1995 - 1996	Trevor Cleverley
1997 - 1998	Derek McGregor
1999 - 2000	Dick Hendon
2001	Ray Atkinson
2001 - 2002	Norm Harkess
2003 - 2004	Mike Hurley
2005 - 2006	Jim Townshend
2007	Trevor McCaughan
2008 - 2010	Tom Morgan
2010 - 2011	Mike Hurley
2012 - 2013	Neil Robertson
2014 - 2018	Ron Kennedy
2019	Warren Davis

## Vice Captains

1988 - 1989	Arthur Chambers
1990	Ian Eyles
1991 - 1992	Alan Tillson
1993 - 1994	Jim Gregg
1995 - 1996	Derek McGregor
1997 - 1998	Dick Hendon
1999 - 2000	Ray Atkinson
2001	Dick Hendon
2002 - 2003	Ray Howe
2004	Jim Townshend
2005	Gavin Paterson
2006	Trevor McCaughan
2007 - 2008	Max Milesi
2009 - 2010	Brian Boomer
2011	Neil Robertson
2012 - 2013	Ron Kennedy
2014 - 2015	Peter Burnett
2016 - 2017	Peter Inkson
2018	Warren Davis

## Secretary/Treasurers

1969 - 1976	John Cuddon
1977 - 1980	Alan Brown
1981 - 1983	Reg Faulls
1984 - 1993	John O’Gorman
1995	Colin Walker

## Secretaries

1994	Trevor Cleverley
1996 - 2000	Eric Johnston
2001 - 2005	Colin Cooke
2006 - 2009	Tom Whitaker
2009 - 2016	George Stringer
2017 -	Margaret Robertson

## Treasurers

1994	Colin Walker
1996 - 1997	Alan Green
1998 - 2000	John Kiddey
2001 - 2010	Rex Bull
2011 - 2015	Ray Porter
2016 -	Peter Burnett

## Life Members

1991 - 2007	John Bull
1991 - 2005	Ray Townshend
1991 - 2017	Murray Stanley
1999 - 2002	Stuart Hunt
2005 - 2017	Alan Barley
2003 -	Alan Brown
2016 -	Rex Bull

## Honorary Members

Dick Mackie	1974
Sir Bob Charles	- before 1996
Eric Hunter	1991
Ross Gardner	1993

David Lawrence - before 1996

Stuart Murray 2000

Dick Hendon 2015

Colin Cooke 2018

David Millward 2018

Terry Downey 2019

Roscoe Taggart 2019

## Auditors

1969 - 1973	Bill Green
1974 - 1982	David Lawrence
1983 - 1992	Eric Hunter
1993 - 2000	David Lawrence
2001 - 2010	Fred Shaw
2011 - 2013	George Walker
2014 -	Kel Doolan

## Apparel Officers

1995 - 1998	Alan H. Brown
1999 - 2008	Jim Preston
2009 - 2012	Derek McGregor
2013 -	Gavin Paterson

## Committees

1973 - 74	JD Bull, JW Dawson, LJ Russell, MW Stanley.
1975 - 76	JW Dawson, RC Townshend, MW Stanley, AH Brown.
1977 - 78	HR Sim, RC Townshend, BV Glubb, RHT Hamilton.
1979 - 80	HR Sim, RC Townshend, BV Glubb, IB Stocks.
1981 - 82	HR Sim, AH Brown, HV Reid, IB Stocks.
1983	AM Tillson, AV Barley, HC Reid.
1984	AM Tillson, AV Barley, AH Brown.
1985	AM Tillson, JT Gregg, A Green.
1986	AM Tillson, JT Gregg, A Chambers.
1987	A Chambers, JT Gregg, MB Henderson.
1988	AM Tillson, JT Gregg, MB Henderson.
1989	AM Tillson, BV Glubb, WM Samson.
1990	AM Tillson, BV Glubb, AJ Brown.
1991	AJ Brown, BV Glubb, JT Gregg.
1992	R Evans, BV Glubb, JT Gregg.

1993 R Evans, TN Direen, TC Cleverley.  
 1994 R Evans, TN Direen, DJ McGregor.  
 1995 R Evans, RI Joyce, D Harvey.  
 1996 D Harvey, RI Joyce, R Hendon.  
 1997 D Harvey, AJ Brown, JW Preston.  
 1998 R Atkinson, AJ Brown, JW Preston, R Hendon.  
 1999 C Cooke, D Millward, N Hobson.  
 2000 C Cooke, D Millward, R Atkinson, N Harkess.  
 2001 N Hobson, R Howe, J Kiddey.  
 2002 N Hobson, JM Hurley, J Kiddey.  
 2003 N Hobson, D McGregor, J Kiddey, T Downey.  
 2004 D Doak, D McGregor, J Kiddey.  
 2005 D Doak, D McGregor, M Milesi.  
 2006 D Doak, D McGregor, M Milesi.  
 2007 D Doak, D McGregor, N Hobson, G Stringer.  
 2008 D Doak, N Hobson, G Stringer.  
 2009 D Doak, N Hobson, A Bilbrough.  
 2010 D Doak, R Kennedy, A Bilbrough, V Mardon.  
 2011 D Doak, R Kennedy, A Bilbrough, V Mardon,  
 R Bull, N Robertson.  
 2012 D Doak, V Mardon, R Bull.  
 2013 P Burnett, G Forster, R Bull, V Mardon.  
 2014 A Freeth, G Forster, R Bull, V Mardon.  
 2015 A Freeth, G Forster, R Bull, J Prebble.  
 2016 G Forster, R Bull, J Prebble.  
 2017 G Forster, R Bull, J Prebble, A Laugesen.  
 2018 G Forster, R Bull, J Prebble, A Laugesen,  
 R Davison, W Davis, C Fox.  
 2019 G Forster, J Prebble, A Laugesen, R Davison,  
 C Fox, R Kennedy, T Whitaker.

## **JD Bull Plate Winners (Beefeater Silver Tray)**

1971 Richard Hamilton  
 1972 John Cuddon  
 1973 Les Russell  
 1974 Richard Hamilton  
 1975 Hugh Sim  
 1976 Maurie Childs  
 1977 Errol Tweedy  
 1978 Ron Challis  
 1979 Bob Garnett  
 1980 Maurie Childs  
 1981 Errol Tweedy  
 1982 - 1983 Dick Brittenden  
 1984 Stuart Murray  
 1985 Ray Townshend  
 1986 Noel Bain  
 1987 Roscoe Taggart  
 1988 Bevan Begg  
 1989 Arthur Chambers  
 1990 Ray Smith  
 1991 Trevor Riseley  
 1992 Noel Direen  
 1993 - 1994 Trevor Riseley  
 1995 David Millward  
 1996 John Kiddey  
 1997 Doug Robertson  
 1998 Allan Brown  
 1999 Derek McGregor  
 2000 - 2001 Craig Allan  
 2002 Jim Townshend  
 2003 Mike Hurley  
 2004 Colin Cooke  
 2005 Allan Brown  
 2006 - 2007 Edgar Henderson  
 2008 Fred Shaw  
 2009 Peter Burnett  
 2010 Ray Porter  
 2011 Neil Robertson  
 2012 Jim Townshend  
 2013 Ron Kennedy  
 2014 Tom Whitaker  
 2015 Edgar Henderson  
 2016 Tom Whitaker  
 2017  
 2018 Ron Kennedy

## The Canterbury "Eaglass" Trophy Winners

1971 Margaret Clements  
 1972 Doris Clegg  
 1973 Margot Armstrong  
 1974 Trixie Green  
 1975 Lorraine Cuddon  
 1976 - 1977 Hazel Gallagher  
 1978 Marguerite Childs  
 1979 Doreen Brown  
 1980 Nancy Dyhrberg  
 1981 Peggy Garnett  
 1982 Betty Samson  
 1983 Nancy Dyhrberg  
 1984 - 1985 Elma Hunt  
 1986 Elaine Stanley  
 1987 - 1988 Josie Tillson  
 1989 Mavis Eyles  
 1990 Mavis Evans  
 1991 Robin Cresswell  
 1992 Hilda Bull  
 1993 - 1994 Glenda Cleverley  
 1995 Jan Morgan  
 1996 Heather Harvey  
 1997 Barbara Taggart  
 1998 Judy Leith  
 1999 - 2000 Marie Shaw  
 2001 Jan Morgan  
 2002 - 2003 Velma Brown  
 2004 Sue Doak  
 2005 Lou Cooke  
 2006 Norma Gatehouse  
 2007 Sue Doak  
 2008 Lou Cooke  
 2009 Jeanette Inkson  
 2010 Marguerite Henderson  
 2011 Sue Doak  
 2012 Moana Pollock  
 2013 Margaret Robertson  
 2014 - 2016 Sue Doak  
 2017  
 2018 Carole Steele

## Eagles Junior Champion Winners

1982 Mark Elley  
 1983 David O'Keefe  
 1984 David Murray  
 1985 Mark Tamutu  
 1986 Chris Pemberton  
 1987 Tony Christie  
 1988 - 1989 Scott Sibley  
 1990 Jonathan Steiller  
 1991 - 1992 Marcus Mariu  
 1993 Karl McKail  
 1994 Alistar Cowan  
 1995 G. Bedhun  
 1996 Isaac Randall  
 1997 Anthony Doyle  
 1998 Tim Evett  
 1999 Jason Lowery  
 2000 Rodney Yee  
 2001 Alex Wong  
 2002 Emerson Hall  
 2003 Rodney Yee  
 2004 Joe Faulkner  
 2005 - 2006 Nic Kay  
 2007 Harry Ryder  
 2008 Owen Burgess  
 2009 - 2010 Jordan Bakermans  
 2011 Jack Harling  
 2012 Henry Pearson  
 2013 Hiroki Miya  
 2014 - 2015 Dominic Brett Kelly  
 2016 Tiaki Ogilvie  
 2017 - 2018 Kazuma Kobori  
 2019 Hayoto Miya

## Eagles Promising Junior of the Year

2009	Owen Burgess	Russley
2010	Jordan Bakermans	Christchurch
2011	Michael McAuley	Russley
2012	Amelia Garvey	Kaiapoi
2013	Hillary O'Connor	Coringa
2014	Dominic Brett Kelly	Hororata
2015	Tom Parker	Russley
2016	Kazuma Kabori	Rangiora
2017	Maddie May	Russley
	Zach May	Russley
2018	Amy Weng	Russley
	Hayato Miya	Russley
2019	Deanna Matthews	Weedons
	Lachlan Mackay	Waimairi Beach

## Alan Barley Trophy - Best Nett Boys -

2019	Toby van Onselen	Waimairi Beach
------	------------------	----------------

## Merle Barley Trophy - Best Nett Girls -

2019	Jessie Mercer	Everglades
------	---------------	------------

## Eagles Piston Trophy

Donated by H W Revell

1970	Mid South Canterbury
1971	Canterbury
1972	Nelson Marlborough
1973	Canterbury & Mid South
1974	Canterbury
1975	Mid South Canterbury
1976	Mid South Canterbury
1977	Canterbury
1978	Canterbury
1979	Canterbury
1980	Canterbury
1981	Mid South Canterbury

1982	Mid South Canterbury
1983	Mid South Canterbury
1984	Canterbury
1985	Aorangi
1986	Canterbury
1987	Aorangi
1988	Canterbury
1989	Aorangi
1990	Canterbury
1991	Canterbury
1992	Aorangi
1993	Aorangi
1994	Aorangi
1995	Canterbury
1996	Aorangi
1997	Aorangi
1998	Aorangi
1999	Canterbury
2000	Aorangi
2001	Aorangi
2002	Aorangi
2003	Canterbury
2004	Canterbury
2005	Aorangi
2006	Canterbury
2007	Aorangi
2008	Canterbury
2009	Aorangi
2010	Canterbury
2011	Canterbury
2012	Canterbury
2013	Aorangi
2014	Canterbury
2015	Aorangi
2016	Aorangi
2017	Aorangi
2018	Aorangi
2019	Aorangi

## Ross Gardner Trophy

1983	Canterbury
1984	Canterbury
1985	Nelson Marlborough
1986	Nelson Marlborough
1987	Canterbury
1988	Canterbury
1989	Canterbury
1990	Nelson Marlborough
1991	Nelson Marlborough
1992	Canterbury
1993	Canterbury
1994	Nelson Marlborough
1995	Nelson Marlborough
1996	Nelson Marlborough
1997	Canterbury
1998	Nelson Marlborough
1999	Nelson Marlborough
2000	Nelson Marlborough
2001	Nelson Marlborough
2002	Canterbury
2003	Canterbury
2004	Nelson Marlborough
2005	Nelson Marlborough
2006	Canterbury
2007	Canterbury
2008	Canterbury
2009	Nelson Marlborough
2010	Nelson Marlborough
2011	Earthquake Christchurch
2012	Nelson Marlborough
2013	Nelson Marlborough
2014	Nelson Marlborough
2015	Canterbury
2016	Match Tied
2017	Earthquake Kaikoura
2018	Canterbury

## Eagle Members & Their Seniority

*The Canterbury Eagles Golfing Society was formed in 1969.  
It is not known how many people formed the first Society,  
but the following is known:*

### 1969 – 1974

Bill Green	Christchurch	Geoff Johnston	Waitikiri
John Bull	Christchurch	Merv McNally	Coringa
Doug Armstrong	Russley	Max Turner	Rangiora
Bill Revell	Christchurch	Bob Milne	Rangiora
Ray Townshend	Waimakariri	Cedric Penlington	Russley
Frank Roberts	Avondale	Richard Hamilton	Russley
Jack Casserley	Kaipoi	Ross Gardner	Amuri
Don Russell	Amberley	Stuart Hunt	Hororata
John Dawson	Waimairi	Les Clegg	Waimairi
Les Russell	Avondale	Hugh Sim	Waimairi
Ron Clements	Templeton	Alan Fraser	Rangiora
Toby Richards	Hororata	Murray Stanley	Kaipoi
Jack Rich	Greendale	Les Lindley	Coringa
John Cuddon	Christchurch	Cliff Dale	Waitikiri
Norrie Martin	Russley	Robin Lambie	Ellesmere
Hec Reid	Harewood	Austin Smith	Kaikoura
Tom Morten	Little River	Maurie Childs	Cheviot
George Shipley	Greendale	Alan Stewart	Akaroa
Des Warwick	Hawarden	Stan Rich	Russley
Tom Stout	Russley	Colin Walker	Kaipoi
Ben Stocks	Amberley	Alf Dyhrberg	Russley
Ken Johnston	Russley	T Allison	
Roy Drummond	Waimakariri		

### 1975

Alan H Brown	Windsor	Wally Samson	Avondale
Vic Smith	Harewood		

### 1976

Brian Cleland	Christchurch	Joe McGregor	Kaikoura
Hec Gallagher	Culverden	Jock Reid	Kaikoura

### 1977

Alan Barley	Russley	Ron Challis	Waitikiri
Stuart Murray	Scargill		

### 1978

Errol Tweedy	Lincoln	Bernie Glubb	Kaipoi
--------------	---------	--------------	--------

### 1979

Bill Bignell	Waimakariri	John Wilson	Hanmer
--------------	-------------	-------------	--------

### 1980

John Stewart	Windsor	Jim Gregg	Waimairi
Fin Hobbs	Templeton	Bob Garnett	Russley
Harold Hartnell	Culverden	Bill Turner	Russley
Doug Cresswell	Charteris Bay	Reg Faulls	Coringa

### 1981

Harry Fletcher	Greendale	Alan Tillson	Russley
----------------	-----------	--------------	---------

### 1982

Ian Eyles	Russley	Geoff Simpson	Rangiora
Dick Brittenden	Waitikiri	Terry Downey	Rawhiti
David Lawrence	Harewood		

<b>1983</b>	Arthur Chambers Grant Lethaby Barry Brownie	Weedons Tai Tapu Akaroa	John O’Gorman Bryan Seddon	Waitikiri Kaikoura			
<b>1984</b>	Ian Ferguson Ron Sutherland Alan Green	Christchurch Kaikoura Waimairi	Des Richardson Mac Henderson Cliff Hibbs	Hanmer Scargill Waitikiri			
<b>1985</b>	Hugh McKay Norm Howard Bob Bradley	Avondale Harewood Russley	Noel Bain Dennis Warner	Harewood Hagley			
<b>1986</b>	Bevan Begg Doug Robertson Roscoe Taggart Neil Mehrrens	Greendale Lake Coleridge Waimakariri Waimakariri	Ray Smith Vic Etwell Trevor Cleverley	Kaikoura Templeton Waitikiri			
<b>1987</b>	Ian Frizzell	Culverden					
<b>1988</b>	Tom Donovan	Coringa	Trevor Riseley	Waitikiri			
<b>1989</b>	Russell Beckett Noel Direen Neil Oliver Jim Monk Miles Jones	Cheviot Hagley Hororata Kaiapoi Harewood	Roger Gilbert Ged Earl Allan J Brown John Allin Rex Orr	Ellesmere Hawarden Kaiapoi Rangiora Templeton			
<b>1990</b>	Ian Pollock John Thomas Rex Evans	Amberley Harewood McLeans Island	Don Harvey Stan Rivett John McCausland	Templeton Hawarden			
<b>1991</b>	Murray Boon Harry Drinnan	Ellesmere Waitikiri	Derek McGregor	Weedons			
<b>1992</b>	Tom Morgan Eric Hunter	Amuri Russley	Brian Mairs Brian Williams	Coringa Scargill			
<b>1993</b>	Bob Hewlett Paul Burnett	Burnham Cheviot	Mike Fitzgibbon Rex Bull	Cheviot Hagley			
<b>1994</b>	Ernie Gillman Fred Shaw Vince Moroney Tony White-Johnson	Rangiora Harewood Lincoln Greendale	Bruce Leech Ian Joyce	Rangiora Hororata			
<b>1995</b>	Allan Reynish Dick Hendon John Kiddey Ken Gatehouse Mike Gilchrist George Walker	Akaroa Coringa Rawhiti Scargill Waitikiri Harewood	Norm Harkess Jim Preston Ken Stacey David Millward Eric Johnston	Avondale Windsor Russley Waimairi Windsor			
<b>1996</b>	Ray Atkinson Brian Newsome	Kaiapoi McLeans Island	Graham Gollan	Amberley			
<b>1997</b>	Ron Kennedy Gary Shepherd Francis Woolley	Charteris Bay Russley Templeton				Bob Goodyear Colin Cooke	Kaikoura Waimairi
<b>1998</b>	Noel Hobson John Morris	Avondale Greendale				Peter Inkson	Scargill
<b>1999</b>	Les Scott Brian O’Malley Ray Howe	Harewood Christchurch Templeton				Bill Archibald Gavin Paterson Trevor Bayliss	Cheviot Coringa Kaiapoi
<b>2000</b>	David Morrish Barry Watts	Ellesmere Templeton				Stuart Oliver Craig Allan	Hororata Windsor
<b>2001</b>	Ken Shipley Bill Snelllex Bill Southgate Mike Hurley David Doak	Greendale Rangiora Russley Waimairi Richmond Hill				Brian Pool John Thompson Ron Fogalele Mike Davies	Hanmer Waitikiri Waimairi Waitikiri
<b>2002</b>	Jim Townshend Ken Williams	Amberley McLeans Island				Edgar Henderson Max Milesi	Akaroa Coringa
<b>2003</b>	Doug Williams	Kaiapoi				John Hoare	Windsor
<b>2004</b>	George Stringer Ken Fergus	Burnham Christchurch				Neil Robertson Don Tucker	Hororata Lincoln
<b>2005</b>	Arthur Pawsey Trevor McCaughan Don Law	Amuri Rawhiti Weedons				Tom Whitaker Bob Ledingham	Kaiapoi Russley
<b>2006</b>	Maurice Henderson	Lincoln				Gary Forster	Avondale
<b>2007</b>	David Stead Allan Bilbrough Brian Hawkins	Hanmer Harewood Waimakariri				Stephen Hill Kel Doolan Brian Boomer	Hanmer Templeton Hagley
<b>2008</b>	Max Walker Peter Burnett	Hawarden Scargill				Ray Porter	Templeton
<b>2009</b>	Moana Pollock	Amberley				Valerie Mardon	Waimairi
<b>2010</b>	Mike Satterthwaite Keith Yorston Dennis McCabe	Culverden Hawarden Templeton				Ray Anderson John Patterson	Ellesmere Waimairi
<b>2011</b>	John Little Michael Stanley Warren Houghton	Amberley Harewood Weedons				Peter Jones Stephen Kilpatrick Alfred Blatch	Culverden Russley Waimakariri

**2012**

Richard Davison	Rangiora	Richard Howaniec	Kaiapoi
Annette Laugesen	McLeans Island		

**2013**

Annette Freeth	Amberley	John Prebble	Cheviot
Geoff Saunders	Clearwater	Rob Phiskie	Lincoln
Basil McPherson	Tai Tapu	Robbie Bell	Waimakariri

**2014**

Stuart Anderson	Cheviot	Trevor Morris	Rawhiti
Murray Allott	Templeton	Maurice Ford	Russley

**2015**

Keith Vogan	Akaroa
-------------	--------

**2016****2017**

Colin Harrison	Cheviot	Chris Fox	Ellesmere
Warren Davis	McLeans Island	Stuart Loe	Scargill

**2018**

Margaret Robertson	Waimakariri	Bruce Yates	Amberley
--------------------	-------------	-------------	----------

**2019**

Alan Smythe	McLeans Island	Ann Glading	Waimairi
-------------	----------------	-------------	----------

# Officers and Committee 2019

**PATRON:** Roger Gilbert

**PRESIDENT:** Neil Robertson

**CAPTAIN:** Warren Davis

**SECRETARY:** Margaret Robertson

**TREASURER:** Peter Burnett

**COMMITTEE:** Gary Forster, John Prebble  
Annette Laugesen, Richard Davison  
Chris Fox, Ron Kennedy  
Tom Whitaker



BACK ROW: Ron Kennedy, Richard Davison, Warren Davis, Peter Burnett, Gary Forster

FRONT ROW: Roger Gilbert, Margaret Robertson, Neil Robertson, Annette Laugesen

INSET: Chris Fox, John Prebble, Tom Whitaker



Canterbury Eagles Golfing Society of New Zealand

The First

50

Years

